

INITIAL RECEIPT

United States Department of the Interior
Bureau of Land Management
 DIV OF LANDS, MINRLS & ENERGY
 ONE N CENTRAL AVE
 PHOENIX, AZ 85004 -4427
 Phone: 602-417-9200

Receipt

No: 4853052

Transaction #: 4981565	
Date of Transaction: 12/17/2020	
CUSTOMER:	
NEW EMPIRE EXPLORATION LLC PO BOX 42831 TUCSON, AZ 85733-2831 US	

LINE #	QTY	DESCRIPTION	REMARKS	UNIT PRICE	TOTAL
1	20.00	LOCATABLE MINERALS / MINING CLAIMS- NEW, UNADJUD, ONE OR MORE AUTH NOS / NEW MINING CLAIM PROCESSING FEE CASES: AMC462373/\$20.00, AMC462374/\$20.00, AMC462375/\$20.00, AMC462376/\$20.00, AMC462377/\$20.00, AMC462378/\$20.00, AMC462379/\$20.00, AMC462380/\$20.00, AMC462381/\$20.00, AMC462382/\$20.00, AMC462383/\$20.00, AMC462384/\$20.00, AMC462385/\$20.00, AMC462386/\$20.00, AMC462387/\$20.00, AMC462388/\$20.00, AMC462389/\$20.00, AMC462390/\$20.00, AMC462391/\$20.00, AMC462392/\$20.00		- n/a -	400.00
2	20.00	LOCATABLE MINERALS / MINING CLAIMS- NEW, UNADJUD, ONE OR MORE AUTH NOS / NEW MINING CLAIMS LOCATION FEE CASES: AMC462373/\$40.00, AMC462374/\$40.00, AMC462375/\$40.00, AMC462376/\$40.00, AMC462377/\$40.00, AMC462378/\$40.00, AMC462379/\$40.00, AMC462380/\$40.00, AMC462381/\$40.00, AMC462382/\$40.00, AMC462383/\$40.00, AMC462384/\$40.00, AMC462385/\$40.00, AMC462386/\$40.00, AMC462387/\$40.00, AMC462388/\$40.00, AMC462389/\$40.00, AMC462390/\$40.00, AMC462391/\$40.00, AMC462392/\$40.00		- n/a -	800.00
		LOCATABLE MINERALS / MINING CLAIMS- NEW, UNADJUD, ONE OR MORE AUTH NOS / NEW MINING CLAIMS MAINTENANCE FEE CASES: AMC462373/\$165.00, AMC462374/\$165.00,			

SCANNED
ENTERED
 DEC 30 2020
 BY: *ML*

3	20.00	AMC462375/\$165.00, AMC462376/\$165.00,	- n/a -	3300.00
		AMC462377/\$165.00, AMC462378/\$165.00,		
		AMC462379/\$165.00, AMC462380/\$165.00,		
		AMC462381/\$165.00, AMC462382/\$165.00,		
		AMC462383/\$165.00, AMC462384/\$165.00,		
		AMC462385/\$165.00, AMC462386/\$165.00,		
		AMC462387/\$165.00, AMC462388/\$165.00,		
		AMC462389/\$165.00, AMC462390/\$165.00,		
		AMC462391/\$165.00, AMC462392/\$165.00		
		TOTAL:		

PAYMENT INFORMATION			
1	AMOUNT:	4500.00	POSTMARKED: N/A
	TYPE:	CHECK	RECEIVED: 12/15/2020
	CHECK NO:	1089	
	NAME:	NEW EMPIRE EXPLORATION LLC PO BOX 42831 TUCSON AZ 85733-2831 US	

REMARKS

This receipt was generated by the automated BLM Collections and Billing System and is a paper representation of a portion of the official electronic record contained therein.

CORRESPONDENCE

TRANSFERS

MAINTENANCE FEES
WAIVERS
POL/NOI

MISCELLANEOUS

**LOCATION NOTICES
AMENDMENTS
STATUS SHEET
GEO REPORT/MTP**

MINING CLAIM STATUS REPORT - Assessment Year 2020-2021

Data Entered: 12/30/2020 mm

MTP Checked By: mm
GEO Checked By: mm

LEAD SERIAL NUMBER: AMC 462373 thru AMC 462392

NUMBER OF CLAIMS & TYPE:

20 LODE
PLACER
ASSOCIATION PLACER
MILL SITE
TUNNEL SITE

CHARGES:

Processing Fee @ \$20 = \$ 400
Location Fee @ \$40 = \$ 800
Maintenance Fee @ \$165 = \$ 3300
Add'l Maint Fee for Assoc Placer = \$
SUBTOTAL \$ 4500
Other Fees \$
Other Fees \$
TOTAL \$

TOTAL ACREAGE: _____ Per Claim
(Placer Only)

NUMBER OF LOCATORS: _____

DOCUMENTS RECEIVED VIA: Over-the-Counter [] Mail TIMELY FILED: Yes [] No []

LEGAL DESCRIPTION: T 20S R 22E SEC 27, 28
T _____ R _____ SEC _____
T _____ R _____ SEC _____
T _____ R _____ SEC _____
T _____ R _____ SEC _____

BLM [] FOREST SERVICE [] SUBJ TO PL 359: Yes [] No []
WILDERNESS AREA []

SPLIT ESTATE: N/A [] SX [] PX [] OTHER []
SRHA [] Was proper Notice filed if located on SHRA Land? Yes [] No []

RECONVEYED MINERALS ON BLM LAND REQUIRE OPENING ORDER FROM 1944 TO 1993:
Open to Entry On _____ N/A []

COMMENTS/STATUS: VOID [] PARTIALLY VOID [] PVT MINERALS [] WITHDRAWN LANDS []
OTHER []

AMC 462373

[] Claimant acknowledges that portions of the following claim(s) site(s) may be void or voidable.

Printed Name of Claimant _____ Signature of Claimant _____

*****FINAL ADJUDICATION*****

DATE _____ INITIALS _____

LOCATION NOTICE FOR LODE MINING CLAIM

NOTICE IS HEREBY GIVEN that the T 3

_____ lode mining claim has been located

by NEW EMPIRE EXPLORATION LLC whose current mailing

address is P.O. BOX 42831

TUCSON, AZ 85733

RECEIVED
BLM AZ STATE OFFICE
2020 DEC 15 A 9 01
PHOENIX, ARIZONA
BLM
Date
Stamp

The general course of this claim is NORTH-SOUTH and it is situated in COCHISE

County, Arizona. This claim is 1500 feet in length and 600 feet in width. This claim runs

from the location monument on which this location notice is posted approximately 1490 feet in a

N direction to the NORTH end line and 10 feet in a S direction to the

SOUTH end line. This claim is marked by six monuments, one at each corner and one at the center of each end line of the claim. POSTS ARE WOOD 4' HIGH 2" x 2".

The location monument on which this notice is posted is situated within Section 27, Township 20

S, Range 22 E, Gila Salt River Base and Meridian, Arizona and this claim encompasses portions

of the following quarter section (s), section (s), Township (s) and Range (s) NE 1/4 SEC. 27

T20S R22E

Gila Salt River Base and Meridian, Arizona. CLAIM MARKERS ARE WOOD POSTS 4 FEET HIGH AND

The locality of this claim with reference to some natural object or permanent monument and additional information

(if any) concerning its locality are as follows: THE NE CORNER OF CLAIM T3

IS APPROXIMATELY 1200' W FROM NE CORNER SEC. 27 T20S R22E.

FROM NE CORNER GO 1500' TO SOUTH TO SE CORNER, THEN 600' W TO SW CORNER, THEN 1500' N TO NW CORNER, THEN

600' EAST TO NE CORNER.

DATED AND POSTED on the ground this 15th day of SEPTEMBER, 2020

LOCATOR (s) NEW EMPIRE EXPLORATION LLC

Ryan Ham AGENT

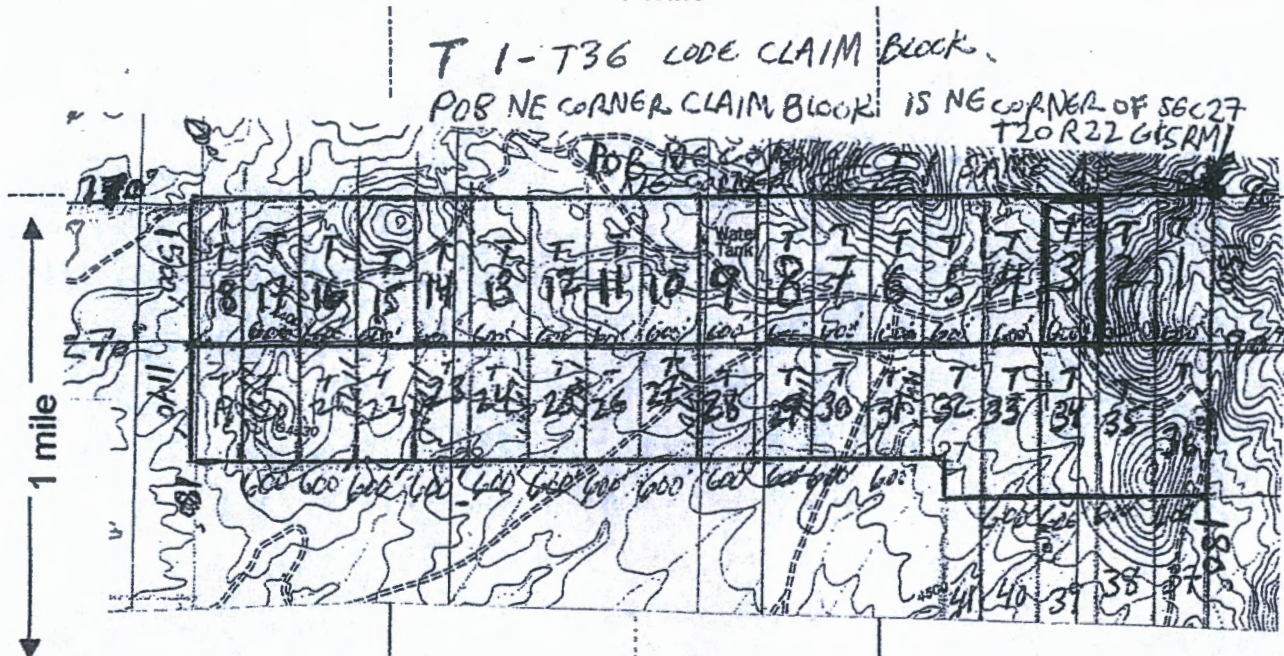
AMC462373

MINING CLAIM MAP

Lode Placer ()

← 1 mile →

T 1-T36 LODE CLAIM BLOCK.
 POB NE CORNER CLAIM BLOCK IS NE CORNER OF SEC 27
 T20 R22 G4SRM



THE NE CORNER OF T 1 & CLAIM BLOCK IS LOCATED AT
 THE NE CORNER OF SEC. 27 T20S R22E G4SRM.
 ALL CLAIM BOUNDARIES ARE DUE N-S & DUE E-W.

Scale: 1" = 2000 feet



RECEIVED
 BLM AZ STAFF OFFICE
 2020 DEC 15 A 9 00
 PHOENIX, ARIZONA

1. The above map depicts the T 3 mining claim, which is located in Section (s) 27, Township 20 S, Range 22 E, Gila and Salt River Base and Meridian, COCHISE County, Arizona.

2. The type of corner and location monuments used are as follows: WOOD POSTS 4' x 2" x 2".
 THE NE CORNER OF CLAIM BLOCK IS 0' FROM NE CORNER OF SEC. 27 T20S R22E G4SRM. THE NE CORNER OF CLAIM BLOCK IS LOCATED ON THE NE CORNER SEC 27 T20S R22E G4SRM.

3. The bearings and distances in degrees and feet between claim corners are as depicted on the map.
 FROM NE CORNER OF CLAIM GO 1500' DUE S 100° TO SE CORNER THEN 600' DUE W 270° TO SW CORNER THEN 1500' DUE N 0° TO NW CORNER THEN 600' DUE E TO NE CORNER.

Form MCF100a
 Revised July 2005

AMC462313

LOCATION NOTICE FOR LODE MINING CLAIM

NOTICE IS HEREBY GIVEN that the

T 4

lode mining claim has been located

by NEW EMPIRE EXPLORATION LLC whose current mailing

address is P.O. BOX 42831

TUCSON, AZ 85733

BLM
Date
Stamp

PHOENIX, ARIZONA

2020 DEC 15 A 9 01

RECEIVED
BLM AZ STATE OFFICE

The general course of this claim is NORTH-SOUTH and it is situated in COCHISE

County, Arizona. This claim is 1500 feet in length and 600 feet in width. This claim runs

from the location monument on which this location notice is posted approximately 1490 feet in a

N direction to the NORTH end line and 10 feet in a S direction to the

SOUTH end line. This claim is marked by six monuments, one at each corner and one at the center of each end line of the claim. POSTS ARE WOOD 4" HIGH 2"x2".

The location monument on which this notice is posted is situated within Section 27, Township 20

S, Range 22 E, Gila Salt River Base and Meridian, Arizona and this claim encompasses portions

of the following quarter section (s), section (s), Township (s) and Range (s) NE 1/4 SEC. 27

T20S R22E

Gila Salt River Base and Meridian, Arizona. CLAIM MARKERS ARE WOOD POSTS 4 FEET HIGH AND

The locality of this claim with reference to some natural object or permanent monument and additional information

(if any) concerning its locality are as follows: THE NE CORNER OF CLAIM T 4

IS APPROXIMATELY 1800' W FROM NE CORNER SEC. 27 T20S R22E

FROM NE CORNER GO 1500' TO SOUTH TO SE CORNER, THEN 600' W TO SW CORNER, THEN 1500' N TO NW CORNER, THEN 600' EAST TO NE CORNER.

DATED AND POSTED on the ground this 15th day of SEPTEMBER 2020

LOCATOR (s) NEW EMPIRE EXPLORATION LLC

Dain Ham AGENT

Form MCF100
Revised July 2005

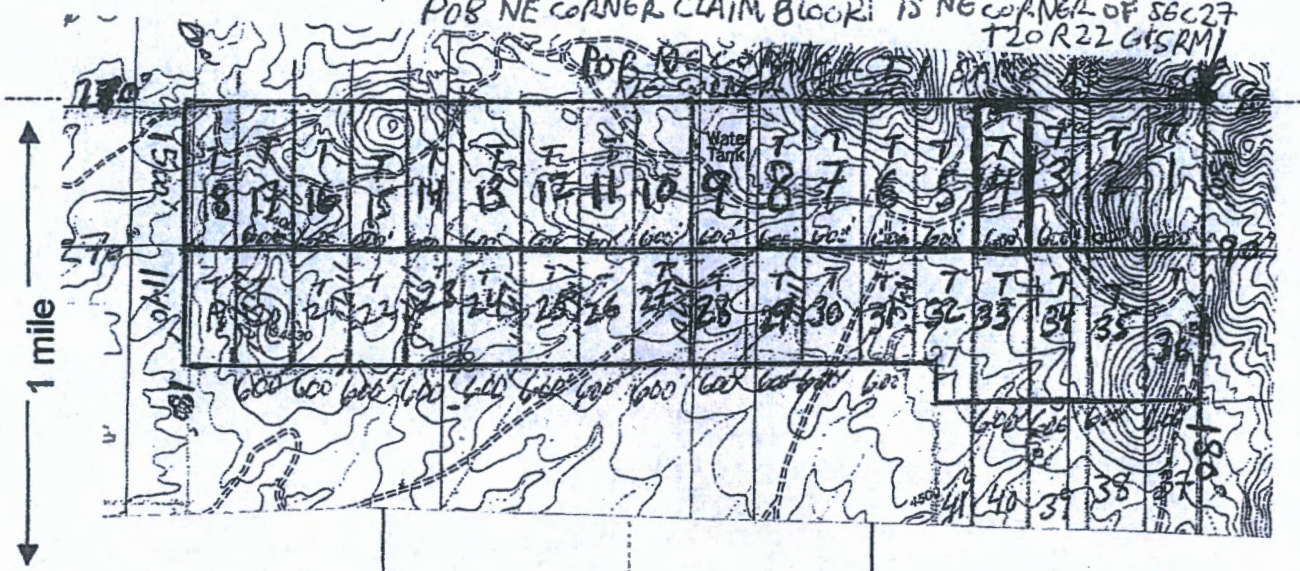
AMC462374

MINING CLAIM MAP

Lode Placer ()

1 mile

T 1-T36 LODE CLAIM BLOCK
 POB NE CORNER CLAIM BLOCK IS NE CORNER OF SEC 27
 T20 R22 G4SRM



AMC462374

THE NE CORNER OF T 1 & CLAIM BLOCK IS LOCATED AT
 THE NE CORNER OF SEC. 27 T20S R22E G4SRM.
 ALL CLAIM BOUNDARIES ARE DUE N-S & DUE E-W.

RECEIVED
 BLM AZ STATE OFFICE
 2020 DEC 15 A 9:01
 PHOENIX, ARIZONA

Scale: 1" = 2000 feet



1. The above map depicts the T 4 mining claim, which is located in Section (s) 27, Township 20 S, Range 22 E, Gila and Salt River Base and Meridian, COCHISE County, Arizona.

2. The type of corner and location monuments used are as follows: WOOD POSTS 4'x2"x2"
THE NE CORNER OF CLAIM BLOCK IS 0' FROM NE CORNER OF SEC. 27 T20S R22E G4SRM. THE NE CORNER OF CLAIM BLOCK IS
LOCATED ON THE NE CORNER SEC. 27 T20S R22E G4SRM.

3. The bearings and distances in degrees and feet between claim corners are as depicted on the map.
FROM NE CORNER OF CLAIM GO 1500' DUE S 80° TO SE CORNER, THEN 600' DUE W 27° TO SW CORNER, THEN N 1500' DUE N 0° TO NW CORNER THEN 600' DUE E TO NE CORNER.

Form MCF100a
 Revised July 2005

LOCATION NOTICE FOR LODE MINING CLAIM

NOTICE IS HEREBY GIVEN that the T 5

_____ lode mining claim has been located

by NEW EMPIRE EXPLORATION LLC whose current mailing

address is P.O. BOX 42831

TUCSON, AZ 85733

BLM
Date
Stamp

RECEIVED
BLM AZ STATE OFFICE
2020 DEC 15 A 9 01
PHOENIX, ARIZONA

The general course of this claim is NORTH-SOUTH and it is situated in COCHISE

County, Arizona. This claim is 1500 feet in length and 600 feet in width. This claim runs

from the location monument on which this location notice is posted approximately 1490 feet in a

N direction to the NORTH end line and 10 feet in a S direction to the

SOUTH end line. This claim is marked by six monuments, one at each corner and one at the center of each end line of the claim. POSTS ARE WOOD 4' HIGH 2" x 2".

The location monument on which this notice is posted is situated within Section 27, Township 20

S, Range 22 E, Gila Salt River Base and Meridian, Arizona and this claim encompasses portions

of the following quarter section (s), section (s), Township (s) and Range (s) NE 1/4 T20S R22E

SEC 27 & NW 1/4 T20S R22E SEC. 27

Gila Salt River Base and Meridian, Arizona. CLAIM MARKERS ARE WOOD POSTS

4 FEET HIGH AND
The locality of this claim with reference to some natural object or permanent monument and additional information

(if any) concerning its locality are as follows: THE NE CORNER OF CLAIM T 5

IS APPROXIMATELY 2400' W FROM NE CORNER SEC 27 T20S R22E

FROM NE CORNER GO 1500' TO SOUTH TO SE CORNER, THEN 600' W
TO SW CORNER, THEN 1500' N TO NW CORNER, THEN

600' EAST TO NE CORNER.

DATED AND POSTED on the ground this 15th day of SEPTEMBER, 2020

LOCATOR (S) NEW EMPIRE EXPLORATION LLC

Rayn [Signature] AGENT

AMC462375

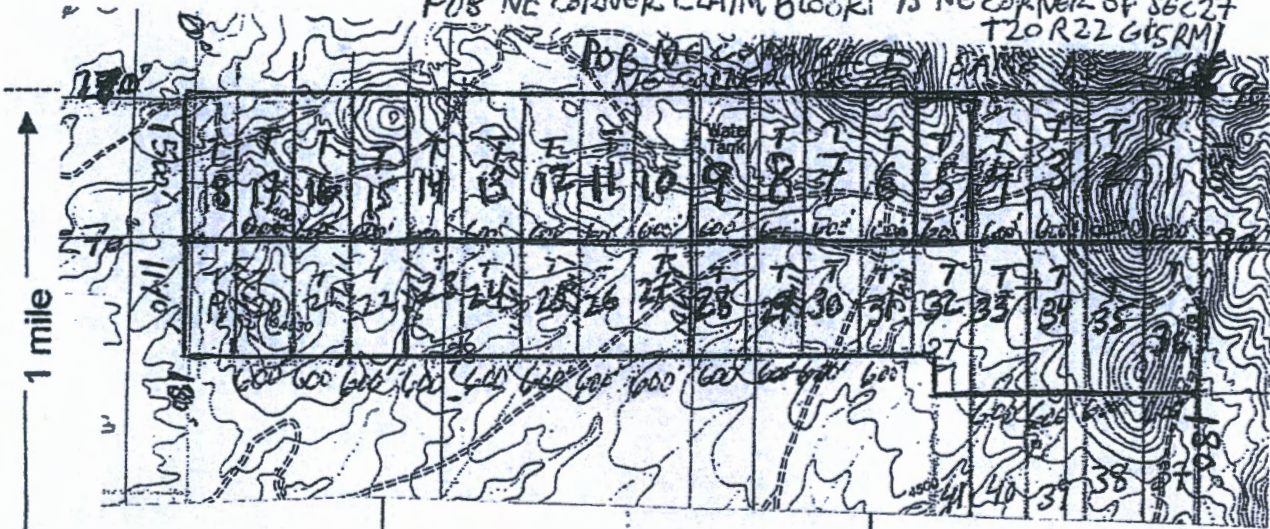
MINING CLAIM MAP

Lode Placer ()

← 1 mile →

T 1-T36 LODE CLAIM BLOCK.

POB NE CORNER CLAIM BLOCK IS NE CORNER OF SEC 27 T20R22G4SRM



THE NE CORNER OF T 1 & CLAIM BLOCK IS LOCATED AT THE NE CORNER OF SEC. 27 T20S R22E G4SRM. ALL CLAIM BOUNDARIES ARE DUE N-S & DUE E-W.

RECEIVED
 BLM AZ STATE OFFICE
 2020 DEC 15 A 9:00
 PHOENIX, ARIZONA

Scale: 1" = 2000 feet



1. The above map depicts the T 5 mining claim, which is located in Section (s) 27, Township 20 S, Range 22 E, Gila and Salt River Base and Meridian, COCHISE County, Arizona.

2. The type of corner and location monuments used are as follows: WOOD POSTS 4" x 2" x 2". THE NE CORNER OF CLAIM BLOCK IS 0' FROM NE CORNER OF SEC. 27 T20S R22E G4SRM. THE NE CORNER OF CLAIM BLOCK IS LOCATED ON THE NE CORNER SEC 27 T20S R22E G4SRM.

3. The bearings and distances in degrees and feet between claim corners are as depicted on the map. FROM NE CORNER OF CLAIM GO 1500' DUE S 80° TO SE CORNER, THEN 600' DUE W 27° TO SW CORNER, THEN 1500' DUE N 0° TO NW CORNER THEN 600' DUE E TO NE CORNER.

Form MCF100a
Revised July 2005

AN462375

LOCATION NOTICE FOR LODE MINING CLAIM

NOTICE IS HEREBY GIVEN that the T6

lode mining claim has been located

by NEW EMPIRE EXPLORATION LLC whose current mailing

address is P.O. BOX 42831

TUCSON, AZ 85733

RECEIVED
DEPT. OF STATE OFFICE
2020 DEC 15 A 9 01
PHOENIX, ARIZONA
BLM
Date
Stamp

The general course of this claim is NORTH-SOUTH and it is situated in COCHISE

County, Arizona. This claim is 1500 feet in length and 600 feet in width. This claim runs

from the location monument on which this location notice is posted approximately 1490 feet in a

N direction to the NORTH end line and 10 feet in a S direction to the

SOUTH end line. This claim is marked by six monuments, one at each corner and one at the center of each end line of the claim. POSTS ARE WOOD 4" HIGH 2"x2".

The location monument on which this notice is posted is situated within Section 27, Township 20

S, Range 22 E, Gila Salt River Base and Meridian, Arizona and this claim encompasses portions

of the following quarter section (s), section (s), Township (s) and Range (s) NW 1/4 SEC. 27

T20S R22E

Gila Salt River Base and Meridian, Arizona. CLAIM MARKERS ARE WOOD POSTS 4 FEET HIGH AND

The locality of this claim with reference to some natural object or permanent monument and additional information

(if any) concerning its locality are as follows: THE NE CORNER OF CLAIM T6

IS APPROXIMATELY 3000' W FROM NE CORNER SEC. 27 T20S R22E

FROM NE CORNER GO 1500' TO SOUTH TO SE CORNER, THEN 600' W TO SW CORNER, THEN 1500' N TO NW CORNER, THEN 600' EAST TO NE CORNER.

DATED AND POSTED on the ground this 15th day of SEPTEMBER, 2020

LOCATOR (s): NEW EMPIRE EXPLORATION LLC

Raymond Jones ... AGENT

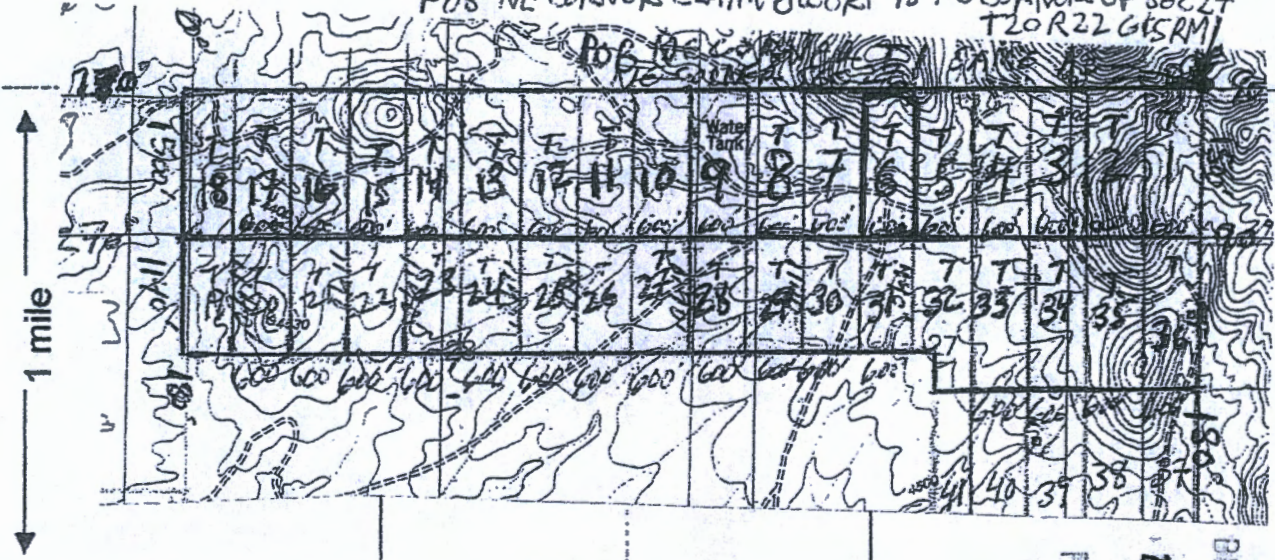
AMC462376

MINING CLAIM MAP

Lode ∇ Placer ()

1 mile

T 1-T36 LODE CLAIM BLOCK.
 POB NE CORNER CLAIM BLOCK IS NE CORNER OF SEC 27
 T20 R22 G4SRM



THE NE CORNER OF T 1 & CLAIM BLOCK IS LOCATED
 THE NE CORNER OF SEC. 27 T20S R22E G4SRM.
 ALL CLAIM BOUNDARIES ARE DUE N-S & DUE E-W.

RECEIVED
 BUREAU OF STATE OFFICER
 2020 DEC 15 A 9 02
 PHOENIX, ARIZONA

Scale: 1" = 2000 feet



1. The above map depicts the T 6 mining claim, which is located in Section (s)
27, Township 20 S, Range 22 E, Gila and Salt River Base and Meridian,
COCHISE County, Arizona.

2. The type of corner and location monuments used are as follows: WOOD POSTS 4"x2"x2"
 THE NE CORNER OF CLAIM BLOCK IS 0' FROM NE CORNER OF
 SEC. 27 T20S R22E G4SRM. THE NE CORNER OF CLAIM BLOCK IS
 LOCATED ON THE NE CORNER SEC 27 T 20S R22E G4SRM.

3. The bearings and distances in degrees and feet between claim corners are as depicted on the map.
 FROM NE CORNER OF CLAIM GO 1500' DUE S 180° TO SE CORNER,
 THEN 600' DUE W 270° TO SW CORNER, THEN 1500' DUE N
 0° TO NW CORNER THEN 600' DUE E TO NE CORNER.

Form MCF100a
 Revised July 2005

AMC462376

LOCATION NOTICE FOR LODE MINING CLAIM

NOTICE IS HEREBY GIVEN that the

T 7

lode mining claim, has been located

by NEW EMPIRE EXPLORATION LLC whose current mailing

address is P.O. BOX 42831

TUCSON, AZ 85733

BLM
Date
Stamp

RECEIVED
DEPT. OF STATE OFFICE
2020 DEC 15 A 9 02
PHOENIX, ARIZONA

The general course of this claim is NORTH-SOUTH and it is situated in COCHISE

County, Arizona. This claim is 1500 feet in length and 600 feet in width. This claim runs

from the location monument on which this location notice is posted approximately 1490 feet in a

N direction to the NORTH end line and 10 feet in a S direction to the

SOUTH end line. This claim is marked by six monuments, one at each corner and one at the center of each end line of the claim. POSTS ARE WOOD 4' HIGH 2" x 2"

The location monument on which this notice is posted is situated within Section 27, Township 20

S, Range 22 E, Gila Salt River Base and Meridian, Arizona and this claim encompasses portions

of the following quarter section (s), section (s), Township (s) and Range (s) NW 1/4 SEC. 27

T20S R22E

Gila Salt River Base and Meridian, Arizona. CLAIM MARKERS ARE WOOD POSTS 4 FEET HIGH AND

The locality of this claim with reference to some natural object or permanent monument and additional information

(if any) concerning its locality are as follows: THE NE CORNER OF CLAIM T 7

IS APPROXIMATELY 3600' W FROM NE CORNER SEC 27 T20S R22E

FROM NE CORNER GO 1500' TO SOUTH TO SE CORNER, THEN 600' W TO SW CORNER, THEN 1500' N TO NW CORNER, THEN

600' EAST TO NE CORNER.

DATED AND POSTED on the ground this 15th day of SEPTEMBER, 2020

LOCATOR (s) NEW EMPIRE EXPLORATION LLC

Raymond AGENT

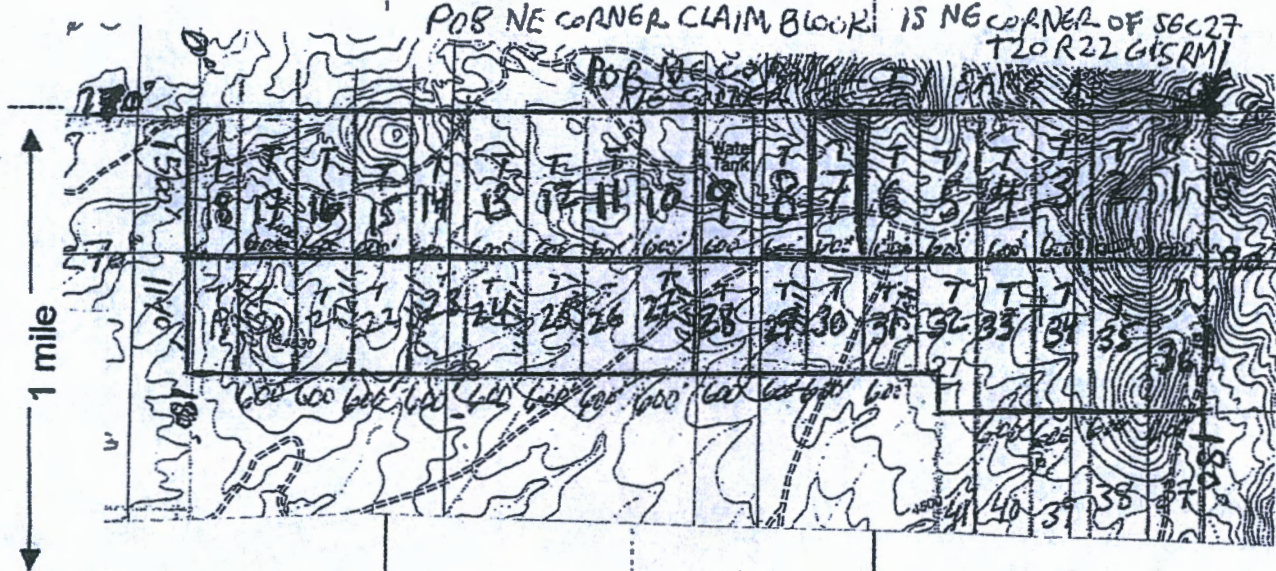
AMC462377

MINING CLAIM MAP

Lode (A) Placer ()

1 mile

T 1-T36 LODE CLAIM BLOCK
 POS NE CORNER CLAIM BLOCK IS NE CORNER OF SEC 27
 T20 R22 G4SRM



THE NE CORNER OF T 1 & CLAIM BLOCK IS LOCATED
 THE NE CORNER OF SEC. 27 T20S R22E G4SRM.
 ALL CLAIM BOUNDARIES ARE DUE N-S & DUE E-W.

RECEIVED
 BLM AZ STATE OFFICE
 2008 DEC 15 A 9 02
 PHOENIX, ARIZONA

Scale: 1" = 2000 feet



1. The above map depicts the T 7 mining claim, which is located in Section (s) 27, Township 20 S, Range 22 E, Gila and Salt River Base and Meridian, COCHISE County, Arizona.

2. The type of corner and location monuments used are as follows: WOOD POSTS 4'x2'x2'
 THE NE CORNER OF CLAIM BLOCK IS 0' FROM NE CORNER OF SEC. 27 T20S R22E G4SRM. THE NE CORNER OF CLAIM BLOCK IS LOCATED ON THE NE CORNER SEC 27 T 20S R 22E G4SRM.

3. The bearings and distances in degrees and feet between claim corners are as depicted on the map.
 FROM NE CORNER OF CLAIM GO 1500' DUE S 180° TO SE CORNER, THEN 600' DUE W 270° TO SW CORNER, THEN N 1500' DUE N 0° TO NW CORNER THEN 600' DUE E TO NE CORNER.

Form MCF100a
 Revised July 2005

AMC462377

LOCATION NOTICE FOR LODE MINING CLAIM

NOTICE IS HEREBY GIVEN that the T 8

_____ lode mining claim has been located

by NEW EMPIRE EXPLORATION LLC whose current mailing

address is P.O. BOX 42831

TUCSON, AZ 85733

BLM
Date
Stamp

RECEIVED
BLM AZ STATE OFFICE
2020 DEC 15 A 9:02
PHOENIX, ARIZONA

The general course of this claim is NORTH-SOUTH and it is situated in COCHISE

County, Arizona. This claim is 1500 feet in length and 600 feet in width. This claim runs

from the location monument on which this location notice is posted approximately 1490 feet in a

N direction to the NORTH end line and 10 feet in a S direction to the

SOUTH end line. This claim is marked by six monuments, one at each corner and one at the center of each end line of the claim. POSTS ARE WOOD 4' HIGH 2" x 2".

The location monument on which this notice is posted is situated within Section 27, Township 20

S, Range 22 E, Gila Salt River Base and Meridian, Arizona and this claim encompasses portions

of the following quarter section (s), section (s), Township (s) and Range (s) NW 1/4 SEC 27

T20S R22E

Gila Salt River Base and Meridian, Arizona. CLAIM MARKERS ARE WOOD POSTS

4 FEET HIGH AND
The locality of this claim with reference to some natural object or permanent monument and additional information

(if any) concerning its locality are as follows: THE NE CORNER OF CLAIM T 8

IS APPROXIMATELY 4200' W FROM NE CORNER SEC 27 T20S R22E

FROM NE CORNER GO 1500' TO SOUTH TO SE CORNER THEN 600' W TO SW CORNER, THEN 1500' N TO NW CORNER, THEN 600' EAST TO NE CORNER.

DATED AND POSTED on the ground this 15th day of SEPTEMBER, 2020.

LOCATOR (s) NEW EMPIRE EXPLORATION LLC

Raymond Jones AGENT

Form MCF100
Revised July 2005

AMC462378

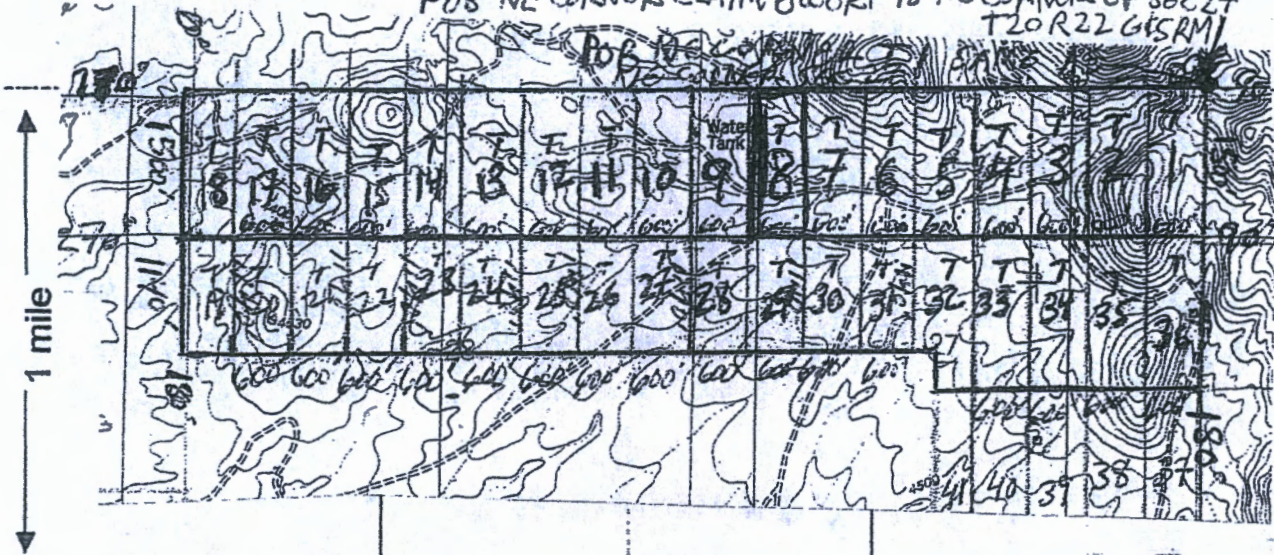
MINING CLAIM MAP

Lode (A) Placer ()

1 mile

T 1-T36 LODE CLAIM BLOCK

POB NE CORNER CLAIM BLOCK IS NE CORNER OF SEC 27 T20R22G4SRM



THE NE CORNER OF T 1 & CLAIM BLOCK IS LOCATED AT THE NE CORNER OF SEC. 27 T20S R22E G4SRM. ALL CLAIM BOUNDARIES ARE DUE N-S & DUE E-W.

RECEIVED
BIMAZ STAFF OFFICE
2010 DEC 15 A 9 00
PHOENIX, ARIZONA

Scale: 1" = 2000 feet



1. The above map depicts the T 8 mining claim, which is located in Section (s) 27, Township 20 S, Range 22 E, Gila and Salt River Base and Meridian, COCHISE County, Arizona.

2. The type of corner and location monuments used are as follows: WOOD POSTS 4" x 2" x 2", THE NE CORNER OF CLAIM BLOCK IS 0' FROM NE CORNER OF SEC. 27 T20S R22E G4SRM. THE NE CORNER OF CLAIM BLOCK IS LOCATED ON THE NE CORNER SEC 27 T20S R22E G4SRM.

3. The bearings and distances in degrees and feet between claim corners are as depicted on the map. FROM NE CORNER OF CLAIM GO 1500' DUE S 180° TO SE CORNER THEN 600' DUE W 270° TO SW CORNER, THEN 1500' DUE N 0° TO NW CORNER THEN 600' DUE E TO NE CORNER.

Form MCF100a
Revised July 2005

This form is available from the Arizona Department of Mines & Mineral Resources and may be reproduced.

AMC462378

LOCATION NOTICE FOR LODE MINING CLAIM

NOTICE IS HEREBY GIVEN that the

T 9

lode mining claim has been located

by NEW EMPIRE EXPLORATION LLC whose current mailing

address is P.O. BOX 42831

TUCSON, AZ 85733

BLM
Date
Stamp

RECEIVED
DENVER STATE OFFICE
2020 DEC 15 A 9 02
PHOENIX, ARIZONA

The general course of this claim is NORTH-SOUTH and it is situated in COCHISE

County, Arizona. This claim is 1500 feet in length and 600 feet in width. This claim runs

from the location monument on which this location notice is posted approximately 1490 feet in a

N direction to the NORTH end line and 10 feet in a S direction to the

SOUTH end line. This claim is marked by six monuments, one at each corner and one at the center of each end line of the claim. POSTS ARE WOOD 4" HIGH 2" x 2".

The location monument on which this notice is posted is situated within Section 27, Township 20

S, Range 22 E, Gila Salt River Base and Meridian, Arizona and this claim encompasses portions

of the following quarter section (s), section (s), Township (s) and Range (s) NE 1/4 SEC 28 T20S

R22E 1/4 NW 1/4 SEC 27 T20S R22E

Gila Salt River Base and Meridian, Arizona. CLAIM MARKERS ARE WOOD POSTS 4 FEET HIGH AND 2" x 2".

The locality of this claim with reference to some natural object or permanent monument and additional information

(if any) concerning its locality are as follows:

THE NE CORNER OF CLAIM T 9

IS APPROXIMATELY 4800' W FROM NE CORNER SEC 27 T20S R22E

FROM NE CORNER GO 1500' TO SOUTH TO SE CORNER, THEN 600' W

TO SW CORNER, THEN 1500' N TO NW CORNER, THEN

600' EAST TO NE CORNER.

DATED AND POSTED on the ground this 15th day of SEPTEMBER, 2020

LOCATOR (s) NEW EMPIRE EXPLORATION LLC

Raym Han AGENT

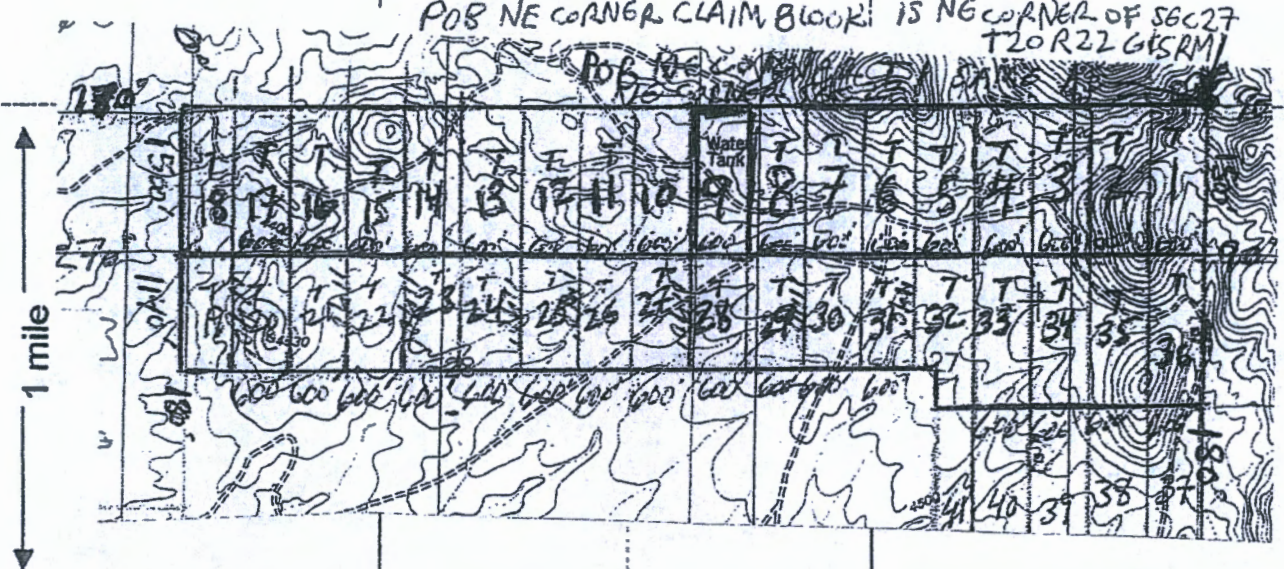
AMC462379

MINING CLAIM MAP

Lode () Placer ()

1 mile

T 1-T36 LODE CLAIM BLOCK.
 POB NE CORNER CLAIM BLOCK IS NE CORNER OF SEC 27
 T20 R22 G4SRM



THE NE CORNER OF T 1 & CLAIM BLOCK IS LOCATED AT
 THE NE CORNER OF SEC. 27 T20S R22E G4SRM.
 ALL CLAIM BOUNDARIES ARE DUE N-S & DUE E-W.

RECEIVED
 BUREAU OF STATE OFFICE
 2020 DEC 15 A 9:02
 PHOENIX, ARIZONA

Scale: 1" = 2000 feet



1. The above map depicts the T 9 mining claim, which is located in Section (s) 27, 28, Township 20 S, Range 22 E, Gila and Salt River Base and Meridian, COCHISE County, Arizona.

2. The type of corner and location monuments used are as follows: WOOD POSTS 4" x 2" x 2".
 THE NE CORNER OF CLAIM BLOCK IS 0' FROM NE CORNER OF SEC. 27 T20S R22E G4SRM. THE NE CORNER OF CLAIM BLOCK IS LOCATED ON THE NE CORNER SEC 27 T20S R22E G4SRM.

3. The bearings and distances in degrees and feet between claim corners are as depicted on the map.
 FROM NE CORNER OF CLAIM GO 1500' DUE S 100' TO SE CORNER THEN 600' DUE W 270' TO SW CORNER, THEN 1500' DUE N 0' TO NW CORNER THEN 600' DUE E TO NE CORNER.

Form MCF100a
 Revised July 2005

AMC462319

LOCATION NOTICE FOR LODE MINING CLAIM

NOTICE IS HEREBY GIVEN that the T10

lode mining claim has been located

by NEW EMPIRE EXPLORATION LLC whose current mailing

address is P.O. BOX 42831

TUCSON, AZ 85733

BLM
Date
Stamp

RECEIVED
BLM AZ STATE OFFICE
2020 DEC 15 A 9:02
PHOENIX, ARIZONA

The general course of this claim is NORTH-SOUTH and it is situated in COCHISE

County, Arizona. This claim is 1500 feet in length and 600 feet in width. This claim runs

from the location monument on which this location notice is posted approximately 1490 feet in a

N direction to the NORTH end line and 10 feet in a S direction to the

SOUTH end line. This claim is marked by six monuments, one at each corner and one at the center of each end line of the claim. POSTS ARE WOOD 4" HIGH 2" x 2"

The location monument on which this notice is posted is situated within Section 28, Township 20

S, Range 22 E, Gila Salt River Base and Meridian, Arizona and this claim encompasses portions

of the following quarter section (s), section (s), Township (s) and Range (s) NE 1/4 SEC. 28

T20S R22E

Gila Salt River Base and Meridian, Arizona. CLAIM MARKERS ARE WOOD POSTS 4 FEET HIGH AND 2" x 2"

The locality of this claim with reference to some natural object or permanent monument and additional information

(if any) concerning its locality are as follows: THE NE CORNER OF CLAIM T10

IS APPROXIMATELY 5400' W FROM NE CORNER SEC. 27 T20S R22E

FROM NE CORNER GO 1500' TO SOUTH TO SE CORNER, THEN 600' W TO SW CORNER, THEN 1500' N TO NW CORNER, THEN 600' EAST TO NE CORNER.

DATED AND POSTED on the ground this 15th day of SEPTEMBER, 2020

LOCATOR (s) NEW EMPIRE EXPLORATION LLC

Kay Jones AGENT

Form MCF100
Revised July 2005

AMC462380

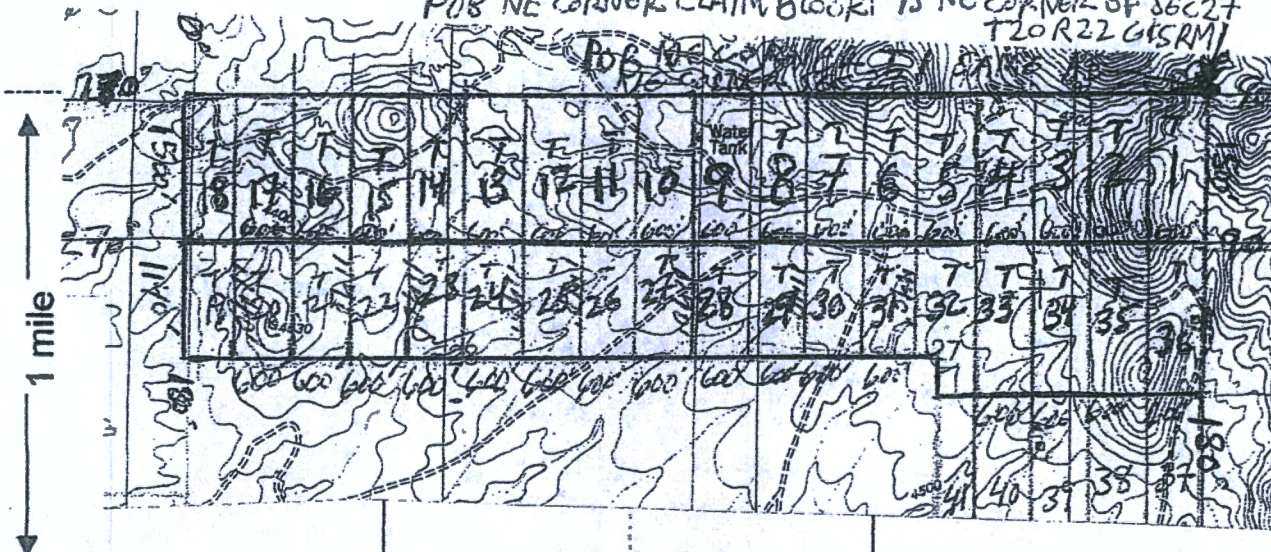
MINING CLAIM MAP

Lode Placer ()

1 mile

T 1 - T 36 LODE CLAIM BLOCK.

POB NE CORNER CLAIM BLOCK IS NE CORNER OF SEC 27 T20S R22E G4SRM



THE NE CORNER OF T 1 & CLAIM BLOCK IS LOCATED AT THE NE CORNER OF SEC. 27 T20S R22E G4SRM. ALL CLAIM BOUNDARIES ARE DUE N-S & DUE E-W.

RECEIVED
 BLM AZ STATE OFFICE
 2020 DEC 15 A 9 02
 PHOENIX, ARIZONA

Scale: 1" = 2000 feet



1. The above map depicts the T 10 mining claim, which is located in Section 28, Township 20 S, Range 22 E, Gila and Salt River Base and Meridian, Cochise County, Arizona.

2. The type of corner and location monuments used are as follows: WOOD POSTS 4' x 2" x 2", THE NE CORNER OF CLAIM BLOCK IS 0' FROM NE CORNER OF SEC. 27 T20S R22E G4SRM. THE NE CORNER OF CLAIM BLOCK IS LOCATED ON THE NE CORNER SEC 27 T20S R22E G4SRM.

3. The bearings and distances in degrees and feet between claim corners are as depicted on the map. FROM NE CORNER OF CLAIM GO 1500' DUE S 100° TO SE CORNER THEN 600' DUE W 27° TO SW CORNER THEN 1500' DUE N 0° TO NW CORNER THEN 600' DUE E TO NE CORNER.

Form MCF100a
Revised July 2005

AN0462380

LOCATION NOTICE FOR LODE MINING CLAIM

NOTICE IS HEREBY GIVEN that the T 11

_____ lode mining claim, has been located

by NEW EMPIRE EXPLORATION LLC whose current mailing

address is P.O. BOX 42831

TUCSON, AZ 85733

RECEIVED
BLM AZ STATE OFFICE
2020 DEC 15 A 9:02
PHOENIX, ARIZONA
BLM
Date
Stamp

The general course of this claim is NORTH-SOUTH and it is situated in COCHISE

County, Arizona. This claim is 1500 feet in length and 600 feet in width. This claim runs

from the location monument on which this location notice is posted approximately 1490 feet in a

N direction to the NORTH end line and 10 feet in a S direction to the

SOUTH end line. This claim is marked by six monuments, one at each corner and one at the center of each end line of the claim. POSTS ARE WOOD 4' HIGH 2" x 2".

The location monument on which this notice is posted is situated within Section 28, Township 20

S, Range 22 E, Gila Salt River Base and Meridian, Arizona and this claim encompasses portions

of the following quarter section (s), section (s), Township (s) and Range (s) NE 1/4 SEC. 28

T20S R22E

Gila Salt River Base and Meridian, Arizona. CLAIM MARKERS ARE WOOD POSTS 4 FEET HIGH AND

The locality of this claim with reference to some natural object or permanent monument and additional information

(if any) concerning its locality are as follows: THE NE CORNER OF CLAIM T 11

IS APPROXIMATELY 6000' FROM NE CORNER SEC 17 T20S R22E

FROM NE CORNER GO 1500' TO SOUTH TO SE CORNER, THEN 600' W TO SW CORNER, THEN 1500' N TO NW CORNER, THEN 600' EAST TO NE CORNER.

DATED AND POSTED on the ground this 15th day of SEPTEMBER, 2020

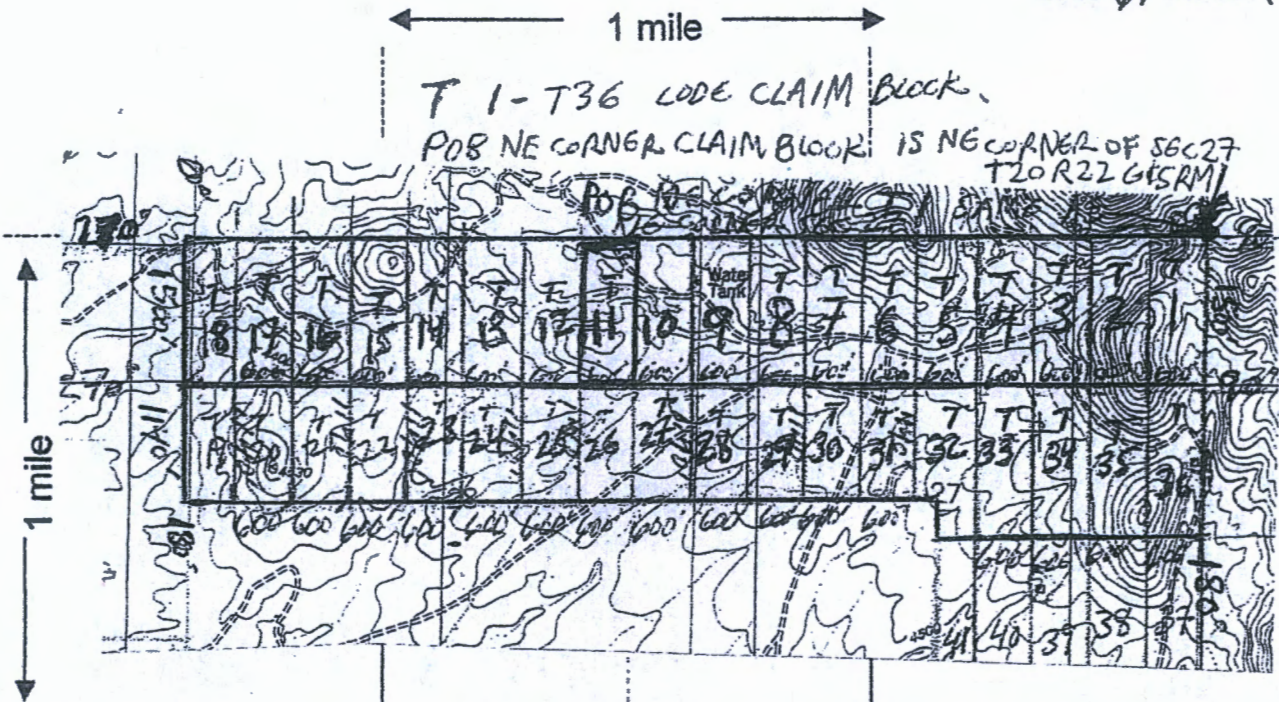
LOCATOR (s) NEW EMPIRE EXPLORATION LLC

Wayne Hans - AGENT

AMC462381

MINING CLAIM MAP

Lode  Placer ()



THE NE CORNER OF T 1 & CLAIM BLOCK IS LOCATED AT THE NE CORNER OF SEC. 27 T20S R22E G4SRM. ALL CLAIM BOUNDARIES ARE DUE N-S & DUE E-W.

Scale: 1" = 2000 feet



PHOENIX, ARIZONA

2020 DEC 15 A 9:02

RECEIVED
ELM AZ STATE OFFICE

AMC462381

1. The above map depicts the T 11 mining claim, which is located in Section (s) 28, Township 20 S, Range 22 E, Gila and Salt River Base and Meridian, COCHISE County, Arizona.

2. The type of corner and location monuments used are as follows: WOOD POSTS 4" x 2" x 2". THE NE CORNER OF CLAIM BLOCK IS 0' FROM NE CORNER OF SEC. 27 T20S R22E G4SRM. THE NE CORNER OF CLAIM BLOCK IS LOCATED ON THE NE CORNER SEC 27 T20S R22E G4SRM.

3. The bearings and distances in degrees and feet between claim corners are as depicted on the map. FROM NE CORNER OF CLAIM GO 1500' DUE S 100° TO SE CORNER. THEN 600' DUE W 27° TO SW CORNER, THEN 1500' DUE N 0° TO NW CORNER THEN 600' DUE E TO NE CORNER.

Form MCF100a
Revised July 2005

LOCATION NOTICE FOR LODE MINING CLAIM

NOTICE IS HEREBY GIVEN that the T 12

lode mining claim has been located

by NEW EMPIRE EXPLORATION LLC whose current mailing

address is P.O. BOX 42831

TUCSON, AZ 85733

BLM
Date
Stamp

PHOENIX, ARIZONA

2020 DEC 15 A 9 02

RECEIVED
BLM AZ STATE OF MINES

The general course of this claim is NORTH-SOUTH and it is situated in COCHISE

County, Arizona. This claim is 1500 feet in length and 600 feet in width. This claim runs

from the location monument on which this location notice is posted approximately 1490 feet in a

N direction to the NORTH end line and 10 feet in a S direction to the

SOUTH end line. This claim is marked by six monuments, one at each corner and one at the center of each end line of the claim. POSTS ARE WOOD 4' HIGH 2" x 2"

The location monument on which this notice is posted is situated within Section 28, Township 20

S, Range 22 E, Gila Salt River Base and Meridian, Arizona and this claim encompasses portions

of the following quarter section (s), section (s), Township (s) and Range (s) NE 1/4 SEC 28

T20S R22E

Gila Salt River Base and Meridian, Arizona. CLAIM MARKERS ARE WOOD POSTS

4 FEET HIGH AND
The locality of this claim with reference to some natural object or permanent monument and additional information

(if any) concerning its locality are as follows: THE NE CORNER OF CLAIM T 12

IS APPROXIMATELY 6500' W FROM NE CORNER SEC 27 T20S R22E

FROM NE CORNER GO 1500' TO SOUTH TO SE CORNER, THEN 600' W

TO SW CORNER, THEN 1500' N TO NW CORNER, THEN

600' EAST TO NE CORNER.
DATED AND POSTED on the ground this 15th day of SEPTEMBER, 2020

LOCATOR (s) NEW EMPIRE EXPLORATION LLC

Raym Sam AGENT

Form MCF100
Revised July 2005

AMC462382

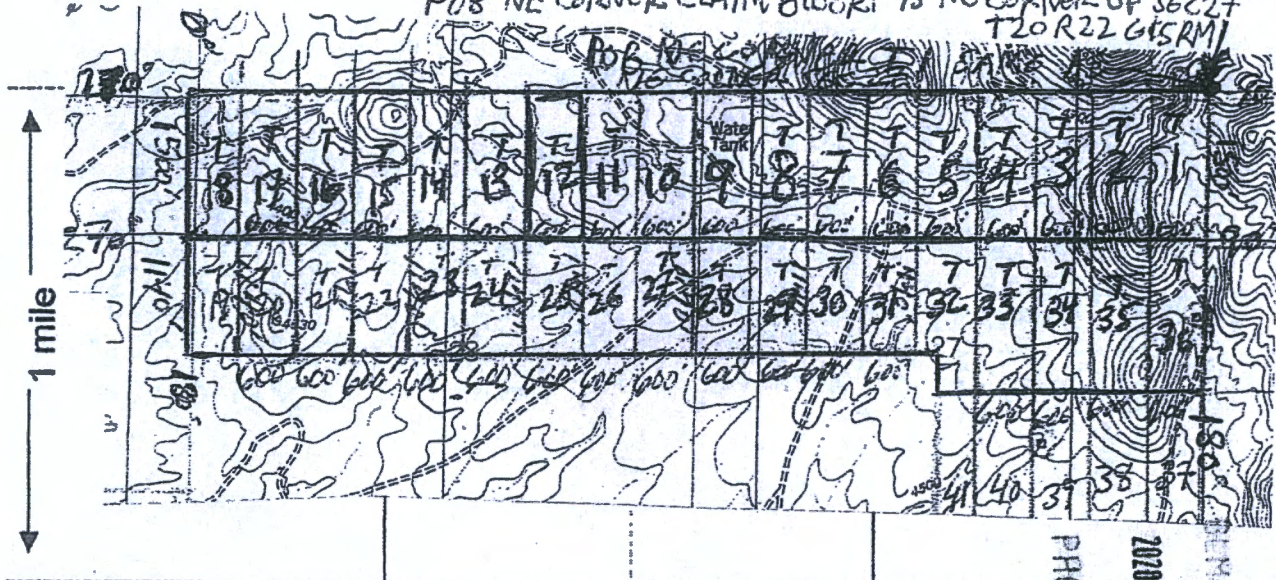
MINING CLAIM MAP

Lode Placer ()

1 mile

T 1-T36 LODE CLAIM BLOCK

POB NE CORNER CLAIM BLOCK IS NE CORNER OF SEC 27 T20 R22 G4SRM



THE NE CORNER OF T 1 & CLAIM BLOCK IS LOCATED AT THE NE CORNER OF SEC. 27 T20S R22E G4SRM. ALL CLAIM BOUNDARIES ARE DUE N-S & DUE E-W.

RECEIVED
 ARIZONA STATE OFFICE
 2020 DEC 15 A 9 03
 PHOENIX, ARIZONA

Scale: 1" = 2000 feet



1. The above map depicts the T 12 mining claim, which is located in Section (s) 28, Township 20 S, Range 22 E, Gila and Salt River Base and Meridian, COCHISE County, Arizona.

2. The type of corner and location monuments used are as follows: WOOD POSTS 4'x2"x2".
 THE NE CORNER OF CLAIM BLOCK IS 0' FROM NE CORNER OF SEC. 27 T20S R22E G4SRM. THE NE CORNER OF CLAIM BLOCK IS LOCATED ON THE NE CORNER SEC 27 T20S R22E G4SRM.

3. The bearings and distances in degrees and feet between claim corners are as depicted on the map.
 FROM NE CORNER OF CLAIM GO 1500' DUE S 180° TO SE CORNER, THEN 600' DUE W 270° TO SW CORNER, THEN 1500' DUE N 0° TO NW CORNER THEN 600' DUE E TO NE CORNER.

Form MCF100a
 Revised July 2005

AMC462382

LOCATION NOTICE FOR LODE MINING CLAIM

NOTICE IS HEREBY GIVEN that the T 13

_____ lode mining claim has been located

by NEW EMPIRE EXPLORATION LLC whose current mailing

address is P.O. BOX 42831

TUCSON, AZ 85733

BLM
Date
Stamp

RECEIVED
BLM AZ STATE OFFICE
2020 DEC 15 A 9 03
PHOENIX, ARIZONA

The general course of this claim is NORTH-SOUTH and it is situated in COCHISE

County, Arizona. This claim is 1500 feet in length and 600 feet in width. This claim runs

from the location monument on which this location notice is posted approximately 1490 feet in a

N direction to the NORTH end line and 10 feet in a S direction to the

SOUTH end line. This claim is marked by six monuments, one at each corner and one at the center of each end line of the claim. POSTS ARE WOOD 4' HIGH 2" x 2"

The location monument on which this notice is posted is situated within Section 28, Township 20

S, Range 22 E, Gila Salt River Base and Meridian, Arizona and this claim encompasses portions

of the following quarter section (s), section (s), Township (s) and Range (s) NE 1/4 SEC. 28

T20S R22E

Gila Salt River Base and Meridian, Arizona. CLAIM MARKERS ARE WOOD POSTS

4 FEET HIGH AND
The locality of this claim with reference to some natural object or permanent monument and additional information

(if any) concerning its locality are as follows: THE NE CORNER OF CLAIM T 13

IS APPROXIMATELY 7200' W FROM NE CORNER SEC 27 T20S R22E

FROM NE CORNER GO 1500' TO SOUTH TO SE CORNER, THEN 600' W

TO SW CORNER, THEN 1500' N TO NW CORNER, THEN

600' EAST TO NE CORNER.
DATED AND POSTED on the ground this 15th day of SEPTEMBER, 2020

LOCATOR (s) NEW EMPIRE EXPLORATION LLC

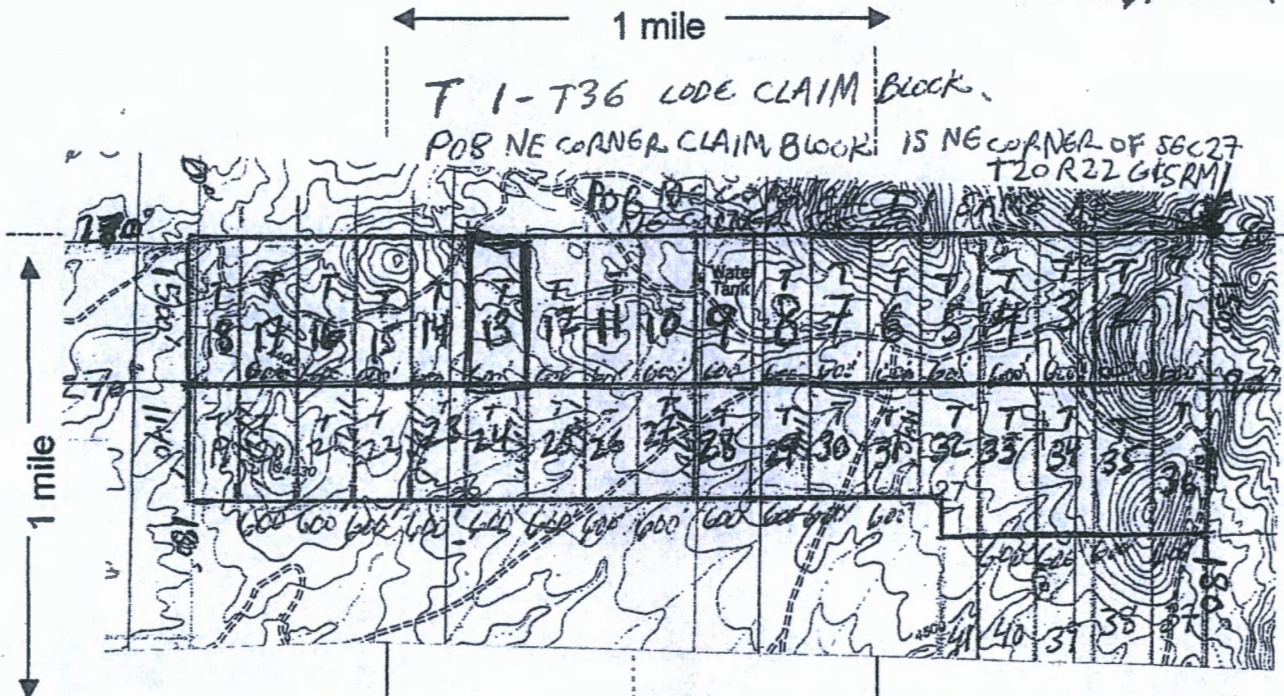
Raymond Davis AGENT

Form MCF100
Revised July 2005

AMC462383

MINING CLAIM MAP

Lode  Placer ()



THE NE CORNER OF T 1 & CLAIM BLOCK IS LOCATED AT THE NE CORNER OF SEC. 27 T20S R22E G4SRM. ALL CLAIM BOUNDARIES ARE DUE N-S & DUE E-W.

RECEIVED
 DEPT. OF STATE OFFICE
 2010 DEC 15 A 9:00
 PHOENIX, ARIZONA

AMC462383

Scale: 1" = 2000 feet



1. The above map depicts the T 13 mining claim, which is located in Section (s) 28, Township 20 S, Range 22 E, Gila and Salt River Base and Meridian, COCHISE County, Arizona.

2. The type of corner and location monuments used are as follows: WOOD POSTS 4" x 2" x 2". THE NE CORNER OF CLAIM BLOCK IS 0' FROM NE CORNER OF SEC. 27 T20S R22E G4SRM. THE NE CORNER OF CLAIM BLOCK IS LOCATED ON THE NE CORNER SEC 27 T20S R22E G4SRM.

3. The bearings and distances in degrees and feet between claim corners are as depicted on the map. FROM NE CORNER OF CLAIM GO 1500' DUE S 180° TO SE CORNER THEN 600' DUE W 270° TO SW CORNER, THEN 1500' DUE N 0° TO NW CORNER THEN 600' DUE E TO NE CORNER.

Form MCF100a
Revised July 2005

LOCATION NOTICE FOR LODE MINING CLAIM

NOTICE IS HEREBY GIVEN that the T 14

lode mining claim has been located

by NEW EMPIRE EXPLORATION LLC whose current mailing

address is P.O. BOX 42831

TUCSON, AZ 85733

RECEIVED
DEMAND STATE OFFICE
2020 DEC 15 A 9:03
PHOENIX, ARIZONA
BLM
Date
Stamp

The general course of this claim is NORTH-SOUTH and it is situated in COCHISE

County, Arizona. This claim is 1500 feet in length and 600 feet in width. This claim runs

from the location monument on which this location notice is posted approximately 1490 feet in a

N direction to the NORTH end line and 10 feet in a S direction to the

SOUTH end line. This claim is marked by six monuments, one at each corner and one at the center of each end line of the claim. POSTS ARE WOOD 4" HIGH 2" x 2".

The location monument on which this notice is posted is situated within Section 28, Township 20

S, Range 22 E, Gila Salt River Base and Meridian, Arizona and this claim encompasses portions

of the following quarter section (s), section (s), Township (s) and Range (s) NW 1/4 SEC 28

T20S R22E

Gila Salt River Base and Meridian, Arizona. CLAIM MARKERS ARE WOOD POSTS 4 FEET HIGH AND 2" x 2"

The locality of this claim with reference to some natural object or permanent monument and additional information

(if any) concerning its locality are as follows: THE NE CORNER OF CLAIM T14

IS APPROXIMATELY 7800' W FROM NE CORNER SEC 27 T20S R22E

FROM NE CORNER GO 1500' TO SOUTH TO SE CORNER, THEN 600' W TO SW CORNER, THEN 1500' N TO NW CORNER, THEN

600' EAST TO NE CORNER OF T14. 15th day of SEPTEMBER 2020

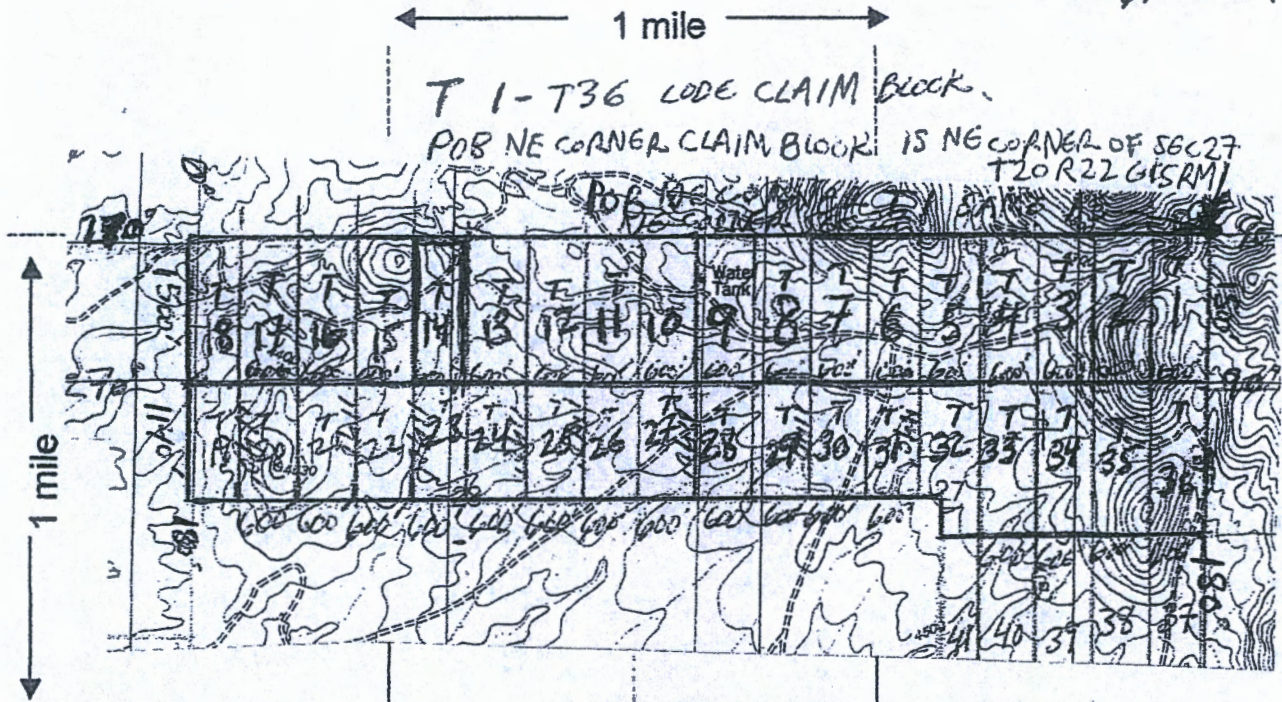
DATED AND POSTED BY NEW EMPIRE EXPLORATION LLC

Raymond Davis AGENT

AMC462384

MINING CLAIM MAP

Lode Placer ()



THE NE CORNER OF T 1 & CLAIM BLOCK IS LOCATED AT THE NE CORNER OF SEC. 27 T20S R22E G&SRM. ALL CLAIM BOUNDARIES ARE DUE N-S & DUE E-W.

RECEIVED
 DEPT. OF STATE OF ARIZONA
 PHOENIX, ARIZONA
 2020 DEC 15 A 9:03

Scale: 1" = 2000 feet



1. The above map depicts the T 14 mining claim, which is located in Section (s) 28, Township 20 S, Range 22 E, Gila and Salt River Base and Meridian, Cochise County, Arizona.

2. The type of corner and location monuments used are as follows: WOOD POSTS 4'x2"x2". THE NE CORNER OF CLAIM BLOCK IS 0' FROM NE CORNER OF SEC. 27 T20S R22E G&SRM. THE NE CORNER OF CLAIM BLOCK IS LOCATED ON THE NE CORNER SEC 27 T20S R22E G&SRM.

3. The bearings and distances in degrees and feet between claim corners are as depicted on the map. FROM NE CORNER OF CLAIM GO 1500' DUE S 100' TO SE CORNER THEN 600' DUE W 27° TO SW CORNER, THEN 1500' DUE N 0° TO NW CORNER THEN 600' DUE E TO NE CORNER.

Form MCF100a
Revised July 2005

AMC462384

LOCATION NOTICE FOR LODE MINING CLAIM

NOTICE IS HEREBY GIVEN that the T 15

_____ lode mining claim has been located

by NEW EMPIRE EXPLORATION LLC whose current mailing

address is P.O. BOX 42831

TUCSON, AZ 85733

RECEIVED
BLM, AZ STATE OFFICE
2020 DEC 15 A 9:03
PHOENIX, ARIZONA
BLM
Date
Stamp

The general course of this claim is NORTH-SOUTH and it is situated in COCHISE

County, Arizona. This claim is 1500 feet in length and 600 feet in width. This claim runs

from the location monument on which this location notice is posted approximately 1490 feet in a

N direction to the NORTH end line and 10 feet in a S direction to the

SOUTH end line. This claim is marked by six monuments, one at each corner and one at the center of each end line of the claim. POSTS ARE WOOD 4' HIGH 2" x 2",

The location monument on which this notice is posted is situated within Section 28, Township 20

S, Range 22 E, Gila Salt River Base and Meridian, Arizona and this claim encompasses portions

of the following quarter section (s), section (s), Township (s) and Range (s) NW 1/4 SEC, 28

T20S R22E

Gila Salt River Base and Meridian, Arizona. CLAIM MARKERS ARE WOOD POSTS 4 FEET HIGH AND

The locality of this claim with reference to some natural object or permanent monument and additional information

(if any) concerning its locality are as follows: THE NE CORNER OF CLAIM T

IS APPROXIMATELY 8400' W FROM NE CORNER SEC 28 T20S R22E

FROM NE CORNER GO 1500' TO SOUTH TO SE CORNER, THEN 600' W

TO SW CORNER, THEN 1500' N TO NW CORNER, THEN

600' EAST TO NE CORNER

DATED AND POSTED on the ground this 15th day of SEPTEMBER, 2020

LOCATOR (s) NEW EMPIRE EXPLORATION LLC
Agent AGENT

AMC462385

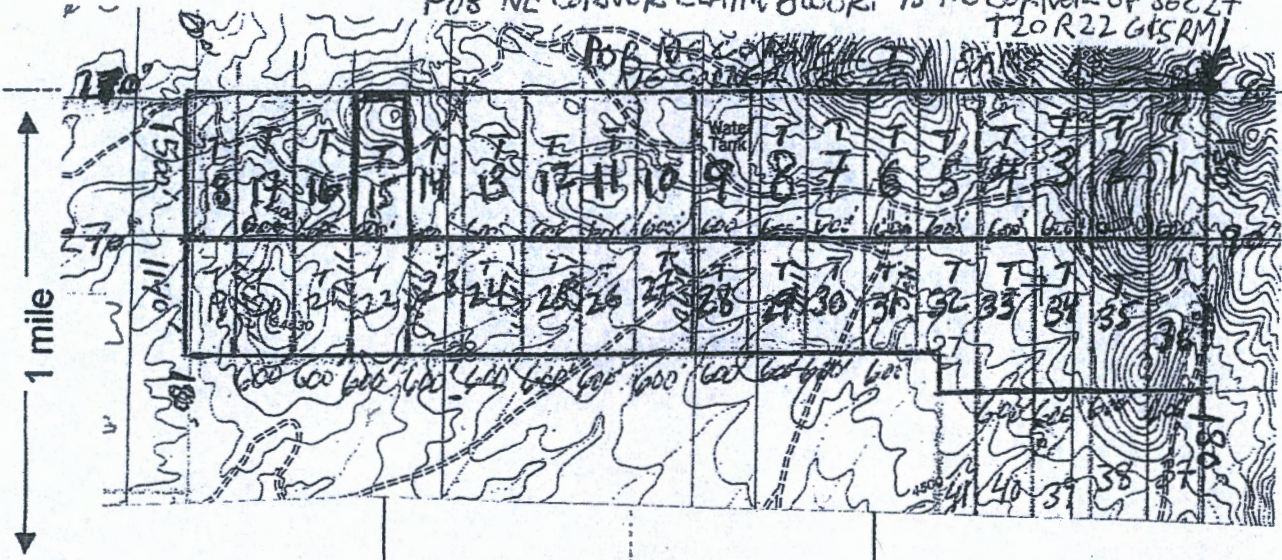
MINING CLAIM MAP

Lode ∇ Placer ()

← 1 mile →

T 1-T36 LODE CLAIM BLOCK.

POB NE CORNER CLAIM BLOCK IS NE CORNER OF SEC 27 T20 R22 G&SRM



THE NE CORNER OF T1 & CLAIM BLOCK IS LOCATED
 THE NE CORNER OF SEC. 27 T20S R22E G&SRM.
 ALL CLAIM BOUNDARIES ARE DUE N-S & DUE E-W.

RECEIVED
 DEPT. OF MINES & MINERAL RESOURCES
 PHOENIX, ARIZONA
 2020 DEC 15 A 9 03

Scale: 1" = 2000 feet



1. The above map depicts the T15 mining claim, which is located in Section (s) 28, Township 20 S, Range 22 E, Gila and Salt River Base and Meridian, COCHISE County, Arizona.

2. The type of corner and location monuments used are as follows: WOOD POSTS 4'x2'x2'.
THE NE CORNER OF CLAIM BLOCK IS 0' FROM NE CORNER OF SEC. 27 T20S R22E G&SRM. THE NE CORNER OF CLAIM BLOCK IS LOCATED ON THE NE CORNER SEC 27 T20S R22E G&SRM.

3. The bearings and distances in degrees and feet between claim corners are as depicted on the map.
FROM NE CORNER OF CLAIM GO 1500' DUE S 180° TO SE CORNER, THEN 600' DUE W 270° TO SW CORNER, THEN 1500' DUE N 0° TO NW CORNER THEN 600' DUE E TO NE CORNER.

Form MCF100a
 Revised July 2005

AMC462385

LOCATION NOTICE FOR LODE MINING CLAIM

NOTICE IS HEREBY GIVEN that the T16

_____ lode mining claim has been located

by NEW EMPIRE EXPLORATION LLC whose current mailing

address is P.O. BOX 42831

TUCSON, AZ 85733

RECEIVED
BLM-AZ STATE OFFICE
2020 DEC 15 A 9:03
PHOENIX, ARIZONA

BLM
Date
Stamp

The general course of this claim is NORTH-SOUTH and it is situated in COCHISE

County, Arizona. This claim is 1500 feet in length and 600 feet in width. This claim runs

from the location monument on which this location notice is posted approximately 1490 feet in a

N direction to the NORTH end line and 10 feet in a S direction to the

SOUTH end line. This claim is marked by six monuments, one at each corner and one at the center of each end line of the claim. POSTS ARE WOOD 4" HIGH 2"x2"

The location monument on which this notice is posted is situated within Section 28, Township 20

S, Range 22 E, Gila Salt River Base and Meridian, Arizona and this claim encompasses portions

of the following quarter section (s), section (s), Township (s) and Range (s) ANW 1/4 SEC 28

T20S R22E

Gila Salt River Base and Meridian, Arizona. CLAIM MARKERS ARE WOOD POSTS

4 FEET HIGH AND

The locality of this claim with reference to some natural object or permanent monument and additional information

(if any) concerning its locality are as follows: THE NE CORNER OF CLAIM T16

IS APPROXIMATELY 9000' W. FROM NE CORNER SEC 27 T20S R22E

FROM NE CORNER GO 1500' TO SOUTH TO SE CORNER, THEN 600' W

TO SW CORNER, THEN 1500' N TO NW CORNER, THEN

600' EAST TO NE CORNER.

DATED AND POSTED on the ground this 15th day of SEPTEMBER, 2020

LOCATOR (s) NEW EMPIRE EXPLORATION LLC

AGENT

AMC462386

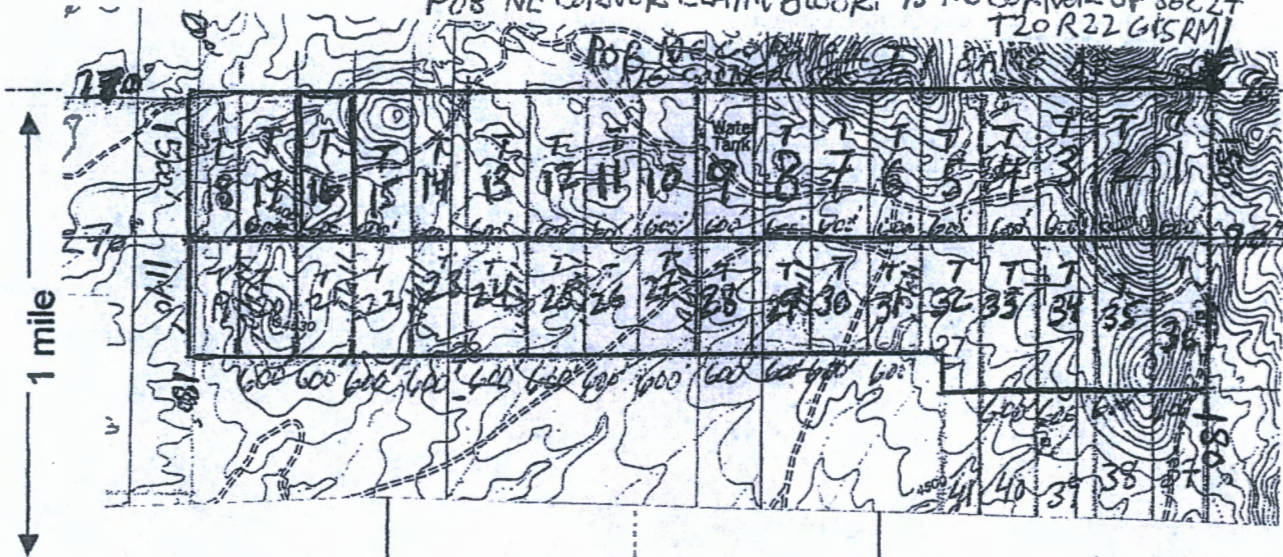
MINING CLAIM MAP

Lode  Placer ()

← 1 mile →

T 1 - T 36 LODE CLAIM BLOCK.

POB NE CORNER CLAIM BLOCK IS NE CORNER OF SEC 27 T20 R22 G4SRM



THE NE CORNER OF T 1 & CLAIM BLOCK IS LOCATED AT THE NE CORNER OF SEC. 27 T20S R22E G4SRM. ALL CLAIM BOUNDARIES ARE DUE N-S & DUE E-W.

RECEIVED
 BUREAU OF STATE MINES
 PHOENIX, ARIZONA
 2020 DEC 15 A 01

Scale: 1" = 2000 feet



1. The above map depicts the T 16 mining claim, which is located in Section (s) 28, Township 20 S, Range 22 E, Gila and Salt River Base and Meridian, COCHISE County, Arizona.

2. The type of corner and location monuments used are as follows: WOOD POSTS 4' x 2" x 2".
 THE NE CORNER OF CLAIM BLOCK IS 0' FROM NE CORNER OF SEC. 27 T20S R22E G4SRM. THE NE CORNER OF CLAIM BLOCK IS LOCATED ON THE NE CORNER SEC 27 T20S R22E G4SRM.

3. The bearings and distances in degrees and feet between claim corners are as depicted on the map.
 FROM NE CORNER OF CLAIM GO 1500' DUE S 100' TO SE CORNER THEN 600' DUE W 27° TO SW CORNER, THEN 1500' DUE N 0° TO NW CORNER THEN 600' DUE E TO NE CORNER.

Form MCF100a
 Revised July 2005

AMC462386

LOCATION NOTICE FOR LODE MINING CLAIM

NOTICE IS HEREBY GIVEN that the

T 17

_____ lode mining claim has been located

by NEW EMPIRE EXPLORATION LLC whose current mailing

address is P.O. BOX 42831

TUCSON, AZ 85733

RECEIVED
BLM AZ STATE OFFICE
2020 DEC 15 A 9 03
PHOENIX, ARIZONA
BLM
Date
Stamp

The general course of this claim is NORTH-SOUTH and it is situated in COCHISE

County, Arizona. This claim is 1500 feet in length and 600 feet in width. This claim runs

from the location monument on which this location notice is posted approximately 1490 feet in a

N direction to the NORTH end line and 10 feet in a S direction to the

SOUTH end line. This claim is marked by six monuments, one at each corner and one at the center of each end line of the claim. POSTS ARE WOOD 4' HIGH 2" x 2".

The location monument on which this notice is posted is situated within Section 28, Township 20

S, Range 22 E, Gila Salt River Base and Meridian, Arizona and this claim encompasses portions

of the following quarter section (s), section (s), Township (s) and Range (s) NW 1/4 SEC 28

T20S R22E

Gila Salt River Base and Meridian, Arizona. CLAIM MARKERS ARE WOOD POSTS 4 FEET HIGH AND

The locality of this claim with reference to some natural object or permanent monument and additional information

(if any) concerning its locality are as follows: THE NE CORNER OF CLAIM T 17

IS APPROXIMATELY 9600' W FROM NE CORNER SEC 27 T20S R22E

FROM NE CORNER GO 1500' TO SOUTH TO SE CORNER, THEN 600' W TO SW CORNER, THEN 1500' N TO NW CORNER, THEN

600' EAST TO NE CORNER.

DATED AND POSTED on the ground this 15th day of SEPTEMBER, 2020

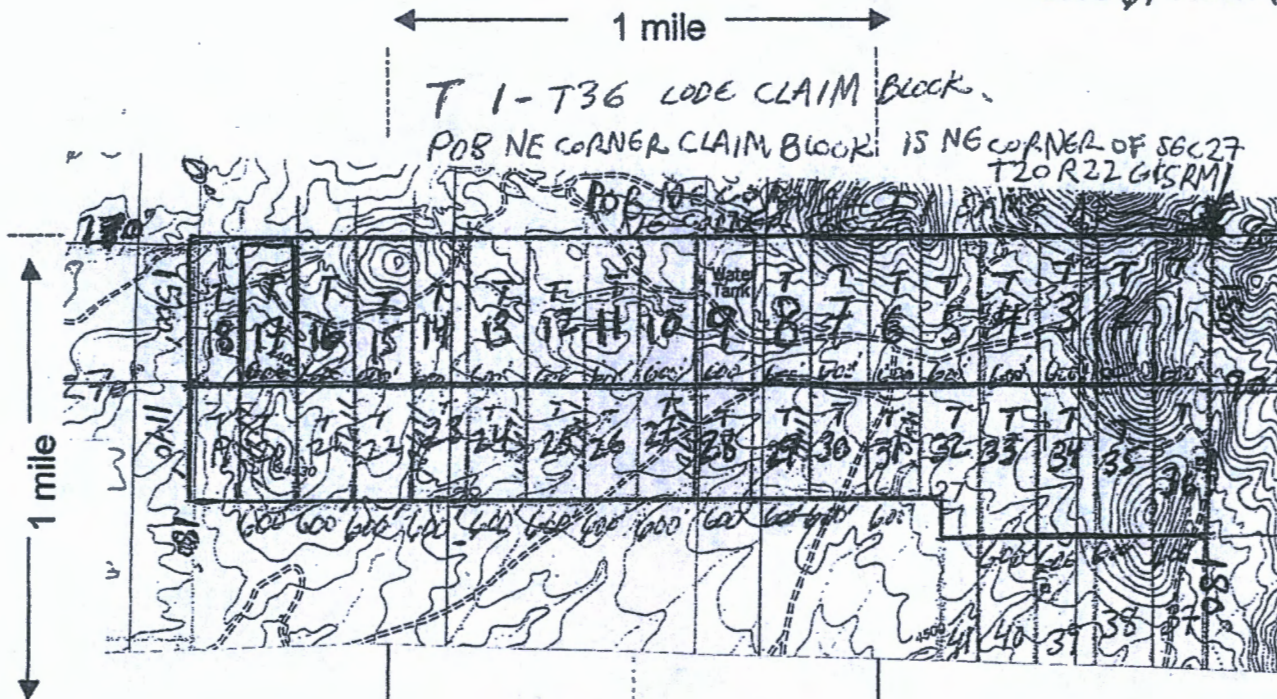
LOCATOR (s) NEW EMPIRE EXPLORATION LLC

AGENT

AMC462387

MINING CLAIM MAP

Lode Placer ()



THE NE CORNER OF T1 & CLAIM BLOCK IS LOCATED AT THE NE CORNER OF SEC. 27 T20S R22E G4SRM. ALL CLAIM BOUNDARIES ARE DUE N-S & DUE E-W.

RECEIVED
PLM 17 STAFF OFFICE
2020 DEC 15 A 9:33
PHOENIX, ARIZONA

Scale: 1" = 2000 feet



1. The above map depicts the T17 mining claim, which is located in Section (s) 28, Township 20 S, Range 22 E, Gila and Salt River Base and Meridian, COCHISE County, Arizona.

2. The type of corner and location monuments used are as follows: WOOD POSTS 4'x2"x2", THE NE CORNER OF CLAIM BLOCK IS 0' FROM NE CORNER OF SEC. 27 T20S R22E G4SRM. THE NE CORNER OF CLAIM BLOCK IS LOCATED ON THE NE CORNER SEC 27 T20S R22E G4SRM.

3. The bearings and distances in degrees and feet between claim corners are as depicted on the map. FROM NE CORNER OF CLAIM GO 1500' DUE S 100° TO SE CORNER THEN 600' DUE W 270° TO SW CORNER THEN 1500' DUE N 0° TO NW CORNER THEN 600' DUE E TO NE CORNER.

Form MCF100a
Revised July 2005

AMC462387

LOCATION NOTICE FOR LODE MINING CLAIM

NOTICE IS HEREBY GIVEN that the T18

lode mining claim has been located

by NEW EMPIRE EXPLORATION LLC whose current mailing

address is P.O. BOX 42831

TUCSON, AZ 85733

BLM
Date
Stamp

PHOENIX, ARIZONA

2020 DEC 15 A 9:03

RECEIVED
BLM AZ STATE OFFICE

The general course of this claim is NORTH-SOUTH and it is situated in COCHISE

County, Arizona. This claim is 1500 feet in length and 360 feet in width. This claim runs

from the location monument on which this location notice is posted approximately 1490 feet in a

N direction to the NORTH end line and 10 feet in a S direction to the

SOUTH end line. This claim is marked by six monuments, one at each corner and one at the center of each end line of the claim. POSTS ARE WOOD 4' HIGH 2" x 2".

The location monument on which this notice is posted is situated within Section 28, Township 20

S, Range 22 E, Gila Salt River Base and Meridian, Arizona and this claim encompasses portions

of the following quarter section (s), section (s), Township (s) and Range (s) NW 1/4 SEC. 28

T20S R22E

Gila Salt River Base and Meridian, Arizona. CLAIM MARKERS ARE WOOD POSTS

4 FEET HIGH AND
The locality of this claim with reference to some natural object or permanent monument and additional information

(if any) concerning its locality are as follows: THE NE CORNER OF CLAIM T18

IS APPROXIMATELY 0' FROM NW CORNER SEC 28 T20S R22E

FROM NE CORNER GO 1500' TO SOUTH TO SE CORNER, THEN 600' W TO SW CORNER, THEN 1500' N TO NW CORNER, THEN 600' EAST TO NE CORNER.

DATED AND POSTED on the ground this 15th day of SEPTEMBER, 2020

LOCATOR (s) NEW EMPIRE EXPLORATION LLC

Raymond J. [Signature] AGENT

Form MCF100
Revised July 2005

AMC462388

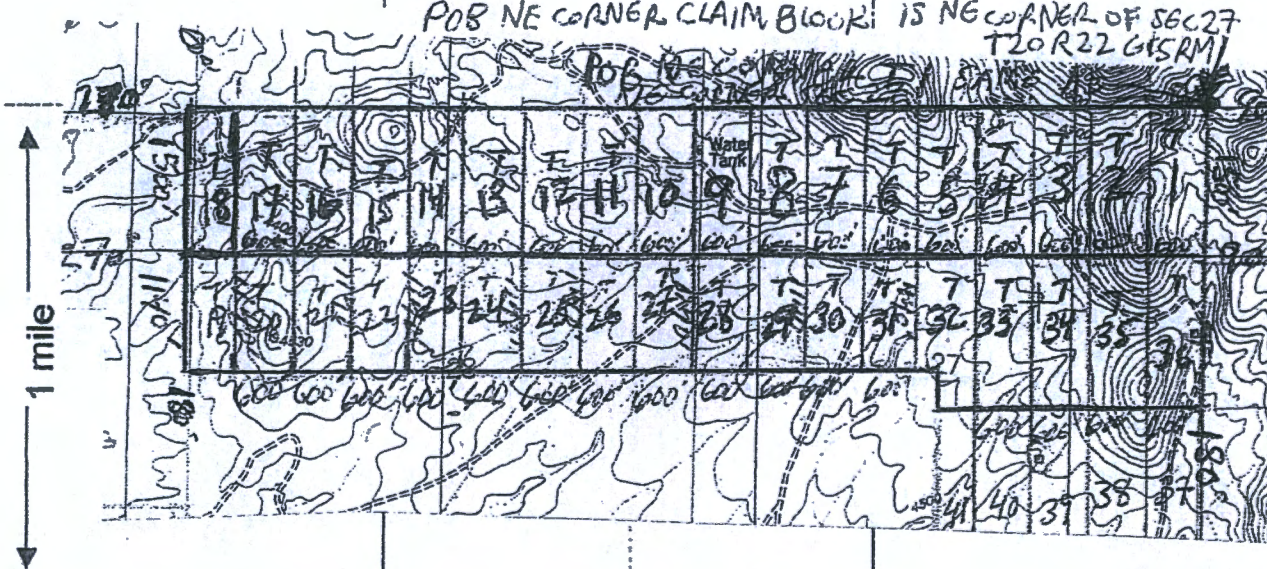
MINING CLAIM MAP

Lode Placer ()

← 1 mile →

T 1 - T 36 LODE CLAIM BLOCK.

POB NE CORNER CLAIM BLOCK IS NE CORNER OF SEC 27 T20 R22 G4SRM



THE NE CORNER OF T 1 & CLAIM BLOCK IS LOCATED AT THE NE CORNER OF SEC. 27 T20S R22E G4SRM. ALL CLAIM BOUNDARIES ARE DUE N-S & DUE E-W.

RECEIVED
 BEN AZ STATE OFFICE
 2010 DEC 15 A 9 03
 PHOENIX, ARIZONA

Scale : 1" = 2000 feet



1. The above map depicts the T 18 mining claim, which is located in Section (s) 28, Township 20 S, Range 22 E, Gila and Salt River Base and Meridian, Cochise County, Arizona.

2. The type of corner and location monuments used are as follows: WOOD POSTS 4" x 2" x 2".
 THE NE CORNER OF CLAIM BLOCK IS 0' FROM NE CORNER OF SEC. 27 T20S R22E G4SRM. THE NE CORNER OF CLAIM BLOCK IS LOCATED ON THE NE CORNER SEC 27 T20S R22E G4SRM.

3. The bearings and distances in degrees and feet between claim corners are as depicted on the map.
 FROM NE CORNER OF CLAIM GO 1500' DUE S 180° TO SE CORNER, THEN 600' DUE W 270° TO SW CORNER, THEN 1500' DUE N 0° TO NW CORNER THEN 600' DUE E TO NE CORNER.

Form MCF100a
 Revised July 2005

AMC462388

LOCATION NOTICE FOR LODE MINING CLAIM

NOTICE IS HEREBY GIVEN that the T25

lode mining claim has been located

by NEW EMPIRE EXPLORATION LLC whose current mailing

address is P.O. BOX 42831

TUCSON, AZ 85733

RECEIVED
BLM AZ STATE OFFICE
2020 DEC 15 A 9 03
PHOENIX, ARIZONA
BLM
Date
Stamp

The general course of this claim is NORTH-SOUTH and it is situated in COCHISE

County, Arizona. This claim is 1140 feet in length and 600 feet in width. This claim runs

from the location monument on which this location notice is posted approximately 10 feet in a

N direction to the NORTH end line and 1130 feet in a S direction to the

SOUTH end line. This claim is marked by six monuments, one at each corner and one at the center of each end line of the claim. POSTS ARE WOOD 4" HIGH 2" x 2".

The location monument on which this notice is posted is situated within Section 28, Township 20

S, Range 22 E, Gila Salt River Base and Meridian, Arizona and this claim encompasses portions

of the following quarter section (s), section (s), Township (s) and Range (s) NE 1/4 SEC 28

T20S R22E

Gila Salt River Base and Meridian, Arizona. CLAIM MARKERS ARE WOOD POSTS

4 FEET HIGH AND
The locality of this claim with reference to some natural object or permanent monument and additional information

(if any) concerning its locality are as follows: THE NE CORNER OF CLAIM T25

IS APPROXIMATELY 1900' SW FROM NE CORNER SEC 28 T20S R22E

FROM NE CORNER GO 1140' TO SOUTH TO SE CORNER, THEN 600' W

TO SW CORNER, THEN 1140' N TO NW CORNER, THEN

600' EAST TO NE CORNER.
DATED AND POSTED on the ground this 15TH day of SEPTEMBER, 20 20

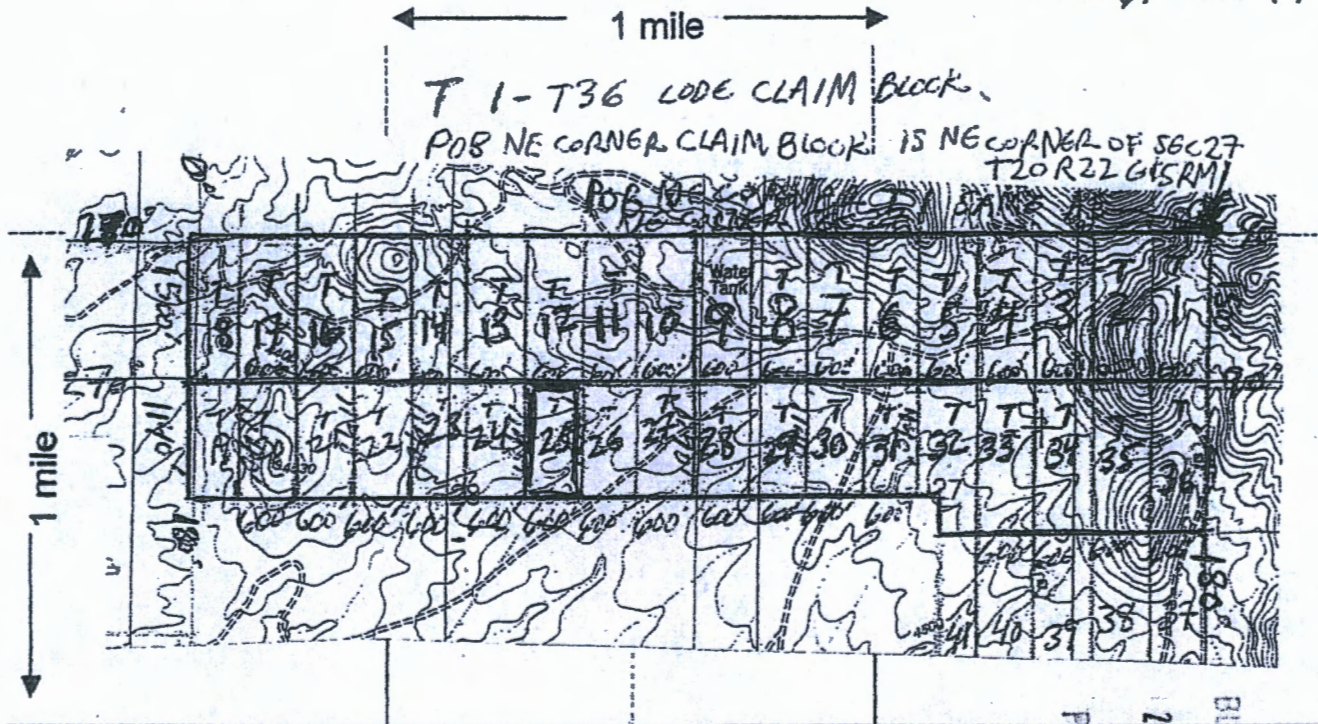
LOCATOR (s) NEW EMPIRE EXPLORATION LLC

David James AGENT

AMC462389

MINING CLAIM MAP

Lode  Placer ()



THE NE CORNER OF T 1 & CLAIM BLOCK IS LOCATED AT THE NE CORNER OF SEC. 27 T20S R22E G4SRM. ALL CLAIM BOUNDARIES ARE DUE N-S & DUE E-W.

Scale: 1" = 2000 feet



1. The above map depicts the T 25 mining claim, which is located in Section (s) 28, Township 20 S, Range 22 E, Gila and Salt River Base and Meridian, Cochise County, Arizona.

2. The type of corner and location monuments used are as follows: WOOD POSTS 4' x 2" x 2". THE NE CORNER OF CLAIM BLOCK IS 0' FROM NE CORNER OF SEC. 27 T20S R22E G4SRM. THE NE CORNER OF CLAIM BLOCK IS LOCATED ON THE NE CORNER SEC 27 T20S R22E G4SRM.

3. The bearings and distances in degrees and feet between claim corners are as depicted on the map. FROM NE CORNER OF CLAIM GO 1500' DUE S 100' TO SE CORNER, THEN 600' DUE W 270' TO SW CORNER, THEN 1500' DUE N 00' TO NW CORNER THEN 600' DUE E TO NE CORNER.

Form MCF100a
Revised July 2005

AMC462389

RECEIVED
2020 DEC 15 A 9 00
BIMM AT STATE OFFICE
PHOENIX, ARIZONA

LOCATION NOTICE FOR LODE MINING CLAIM

NOTICE IS HEREBY GIVEN that the T26

lodg mining claim has been located

by NEW EMPIRE EXPLORATION LLC whose current mailing

address is P.O. BOX 42831

TUCSON, AZ 85733

RECEIVED
BUREAU OF LAND MANAGEMENT
2020 DEC 15 A 9 03
PHOENIX, ARIZONA
BLM
Date
Stamp

The general course of this claim is NORTH-SOUTH and it is situated in COCHISE

County, Arizona. This claim is 1140 feet in length and 600 feet in width. This claim runs

from the location monument on which this location notice is posted approximately 10 feet in a

N direction to the NORTH end line and 1130 feet in a S direction to the

SOUTH end line. This claim is marked by six monuments, one at each corner and one at the center of each end line of the claim. POSTS ARE WOOD 4' HIGH 2" x 2",

The location monument on which this notice is posted is situated within Section 28, Township 20

S, Range 22 E, Gila Salt River Base and Meridian, Arizona and this claim encompasses portions

of the following quarter section (s), section (s), Township (s) and Range (s) NE 1/4 SEC. 28

T20S R22E

Gila Salt River Base and Meridian, Arizona. CLAIM MARKERS ARE WOOD POSTS 4 FEET HIGH AND

The locality of this claim with reference to some natural object or permanent monument and additional information

(if any) concerning its locality are as follows: THE NW CORNER OF CLAIM T26

IS APPROXIMATELY 1900' SW FROM NE CORNER SEC 28 T20S R22E

FROM NE CORNER GO 1140' TO SOUTH TO SE CORNER, THEN 600' W

TO SW CORNER, THEN 1140' N TO NW CORNER, THEN

600' EAST TO NE CORNER.
DATED AND POSTED on the ground this 15th day of SEPTEMBER, 20 20

LOCATOR (s) NEW EMPIRE EXPLORATION LLC

Rayn Hunt AGENT

AMC462390

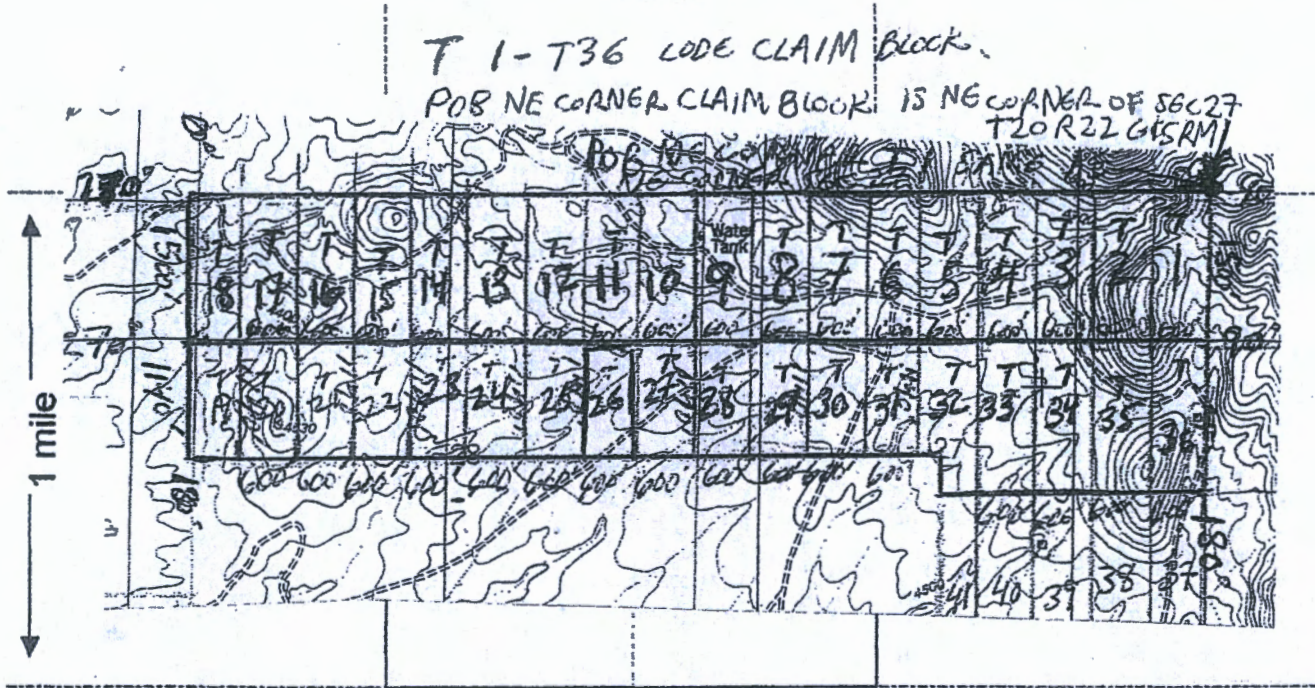
MINING CLAIM MAP

Lode Placer ()

1 mile

T 1-T36 LODE CLAIM BLOCK

POB NE CORNER CLAIM BLOCK IS NE CORNER OF SEC 27 T20S R22E G&SRM



THE NE CORNER OF T1 & CLAIM BLOCK IS LOCATED AT THE NE CORNER OF SEC. 27 T20S R22E G&SRM. ALL CLAIM BOUNDARIES ARE DUE N-S & DUE E-W.

Scale: 1" = 2000 feet



1. The above map depicts the T26 mining claim, which is located in Section (s) 28, Township 20 S, Range 22 E, Gila and Salt River Base and Meridian, Cochise County, Arizona.

2. The type of corner and location monuments used are as follows: WOOD POSTS 4'x2"x2". THE NE CORNER OF CLAIM BLOCK IS 0' FROM NE CORNER OF SEC. 27 T20S R22E G&SRM. THE NE CORNER OF CLAIM BLOCK IS LOCATED ON THE NE CORNER SEC 27 T20S R22E G&SRM.

3. The bearings and distances in degrees and feet between claim corners are as depicted on the map. FROM NE CORNER OF CLAIM GO 1500' DUE S 1000' TO SE CORNER, THEN 600' DUE W 270° TO SW CORNER, THEN 1500' DUE N 0° TO NW CORNER THEN 600' DUE E TO NE CORNER.

RECEIVED
 BLM AZ STATE OFFICE
 2020 DEC 15 A 10:08
 PHOENIX, ARIZONA

Form MCF100a
Revised July 2005

AMC462390

LOCATION NOTICE FOR LODE MINING CLAIM

NOTICE IS HEREBY GIVEN that the

T 34

_____ lode mining claim has been located

by NEW EMPIRE EXPLORATION LLC whose current mailing

address is P.O. BOX 42831

TUCSON, AZ 85733

BLM
Date
Stamp

RECEIVED
BLM AZ STATE OFFICE
2020 DEC 15 A 9:03
PHOENIX, ARIZONA

The general course of this claim is NORTH-SOUTH and it is situated in COCHISE

County, Arizona. This claim is 1500 feet in length and 600 feet in width. This claim runs

from the location monument on which this location notice is posted approximately 10 feet in a

N direction to the NORTH end line and 1490 feet in a S direction to the

SOUTH end line. This claim is marked by six monuments, one at each corner and one at the center of each end line of the claim. POSTS ARE WOOD 4' HIGH 2"x2".

The location monument on which this notice is posted is situated within Section 27, Township 20

S, Range 22 E, Gila Salt River Base and Meridian, Arizona and this claim encompasses portions

of the following quarter section (s), section (s), Township (s) and Range (s) NE 1/4 & SE 1/4 SEC 27

T20S R22E

Gila Salt River Base and Meridian, Arizona. CLAIM MARKERS ARE WOOD POSTS 4 FEET HIGH AND

The locality of this claim with reference to some natural object or permanent monument and additional information

(if any) concerning its locality are as follows: THE NW CORNER OF CLAIM T34

IS APPROXIMATELY 2400' SW FROM NE CORNER SEC 27 T20S R22E

FROM NE CORNER GO 1500' TO SOUTH TO SE CORNER, THEN 600' W TO SW CORNER, THEN 1500' N TO NW CORNER, THEN 600' EAST TO NE CORNER.

DATED AND POSTED on the ground this 15th day of SEPTEMBER, 2020

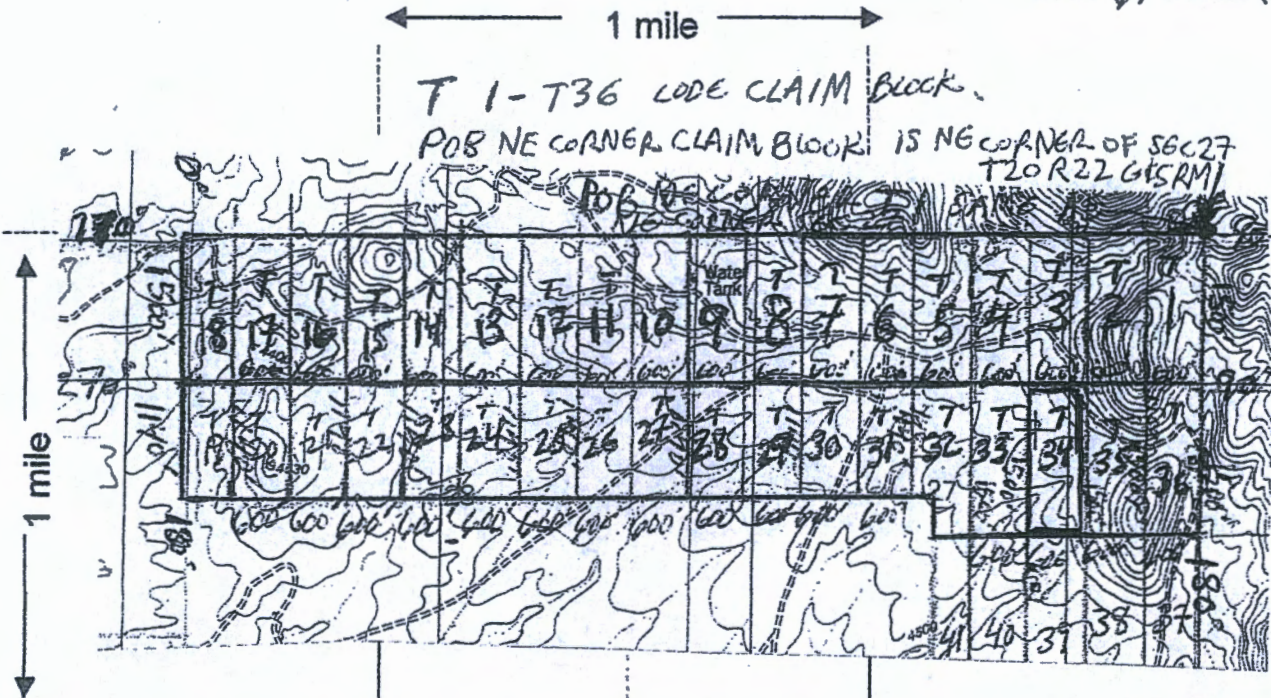
LOCATOR (s) NEW EMPIRE EXPLORATION LLC

Raym [Signature] AGENT

AMC462391

MINING CLAIM MAP

Lode ∇ Placer ()



THE NE CORNER OF T 1 & CLAIM BLOCK IS LOCATED
 THE NE CORNER OF SEC. 27 T20S R22E G4SRM.
 ALL CLAIM BOUNDARIES ARE DUE N-S & DUE E-W.

Scale: 1" = 2000 feet



1. The above map depicts the T 34 mining claim, which is located in Section ()
27, Township 20 S, Range 22 E, Gila and Salt River Base and Meridian,
COCHISE County, Arizona.

2. The type of corner and location monuments used are as follows: WOOD POSTS 4'x2"x2"
THE NE CORNER OF CLAIM BLOCK IS 0' FROM NE CORNER OF
SEC. 27 T20S R22E G4SRM. THE NE CORNER OF CLAIM BLOCK IS
LOCATED ON THE NE CORNER SEC 27 T20S R22E G4SRM.

3. The bearings and distances in degrees and feet between claim corners are as depicted on the map.
FROM NE CORNER OF CLAIM GO 1500' DUE S 180° TO SE CORNER
THEN 600' DUE W 270° TO SW CORNER, THEN 1500' DUE N
0° TO NW CORNER THEN 600' DUE E TO NE CORNER.

RECEIVED
 BLM AZ STATE OFFICE
 2020 DEC 15 A 9 00
 PHOENIX, ARIZONA

Form MCF100a
 Revised July 2005

AMC462391

LOCATION NOTICE FOR LODE MINING CLAIM

NOTICE IS HEREBY GIVEN that the T 39
_____ lode mining claim has been located
by NEW EMPIRE EXPLORATION whose current mailing
address is P.O. BOX 42831
TUCSON, AZ 85733

RECEIVED
BENAV STATE OFFICE
2020 DEC 15 A 9 04
PHOENIX, ARIZONA
BLM
Date
Stamp

The general course of this claim is NORTH-SOUTH and it is situated in COCHISE
County, Arizona. This claim is 1500 feet in length and 600 feet in width. This claim runs
from the location monument on which this location notice is posted approximately 1490 feet in a
N direction to the N end line and 10 feet in a S direction to the
S end line. This claim is marked by six monuments, one at each corner and one at the center of each
end line of the claim. WOOD POSTS 2" X 2" X 4"

The location monument on which this notice is posted is situated within Section 27, Township 20
S, Range 22 E, Gila Salt River Base and Meridian, Arizona and this claim encompasses portions
of the following quarter section (s), section (s), Township (s) and Range (s) SE 1/4 T20S
R22E SEC 27 G&SRM.

Gila Salt River Base and Meridian, Arizona.

The locality of this claim with reference to some natural object or permanent monument and additional information
(if any) concerning its locality are as follows: THE NE CORNER OF T 39 IS APPROX.

3600' SW OF NE CORNER OF SECTION 27 T20S R22E G&SRM
FROM NE CORNER OF CLAIM GO 1500' S TO SE CORNER, THEN
600' W TO SW CORNER, THEN 1500' N TO NW CORNER, THEN GO
600' E TO NE CORNER.

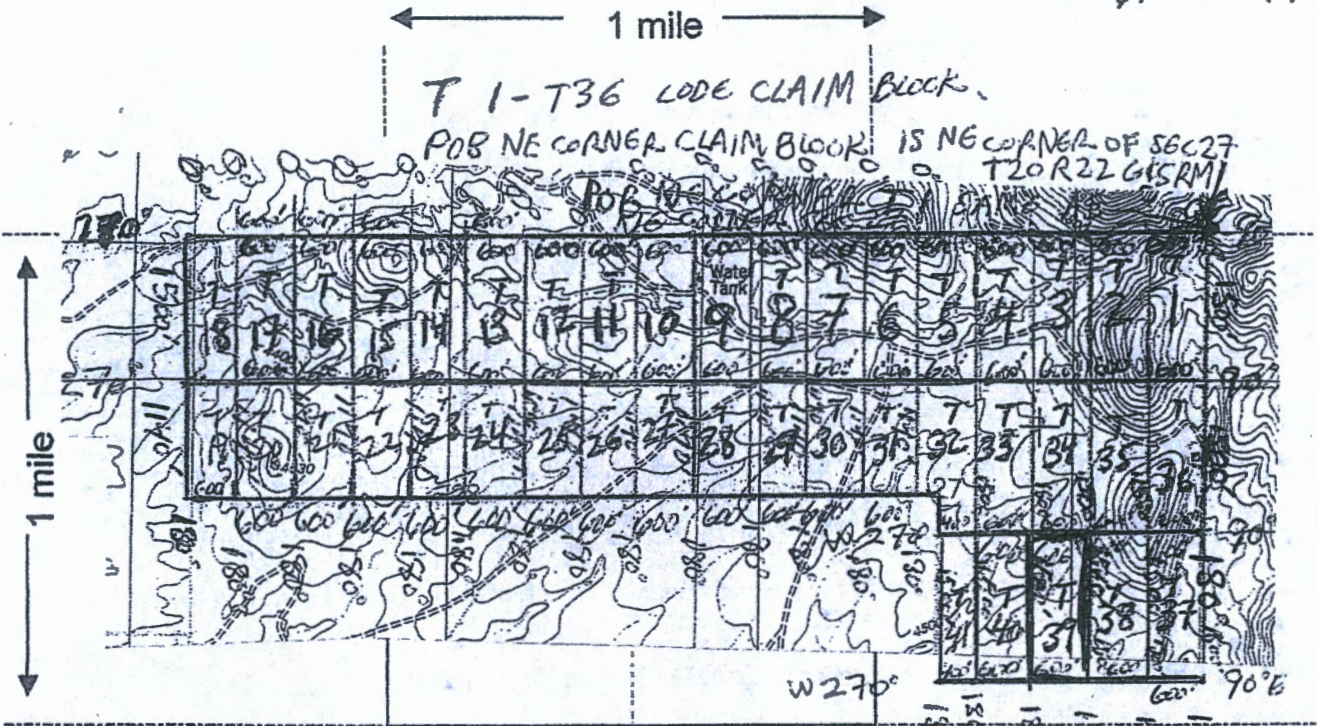
DATED AND POSTED on the ground this 15th day of SEPTEMBER, 2020
NEW EMPIRE EXPLORATION LLC
LOCATOR (s) Raymond Jones AGENT,

Form MCF100
Revised July 2005

AMC462392

MINING CLAIM MAP

Lode Placer ()



THE NE CORNER OF T1 & CLAIM BLOCK IS LOCATED
 THE NE CORNER OF SEC. 27 T20S R22E G4SRM.
 ALL CLAIM BOUNDARIES ARE DUE N-S & DUE E-W.
 0°-180° 90°-270°

Scale: 1" = 2000 feet

1. The above map depicts the T 39 mining claim, which is located in Section (S)
27, Township 20 S, Range 22 E, Gila and Salt River Base and Meridian,
COCHISE County, Arizona.

2. The type of corner and location monuments used are as follows: WOOD POSTS 4" x 2" x 2"
THE NE CORNER OF CLAIM BLOCK IS 0' FROM NE CORNER OF
SEC. 27 T20S R22E G4SRM. THE NE CORNER OF CLAIM BLOCK IS
LOCATED ON THE NE CORNER SEC 27 T20S R22E G4SRM.

3. The bearings and distances in degrees and feet between claim corners are as depicted on the map.
FROM NE CORNER OF CLAIM GO 1500' DUE S 180° TO SE CORNER
THEN 600' DUE W 270° TO SW CORNER, THEN 1500' DUE N
0° TO NW CORNER THEN 600' DUE E TO NE CORNER.

Form MCF100a
 Revised July 2005

This form is available from the Arizona Department of Mines & Mineral Resources and may be reproduced.

AMC462392

RECEIVED
 ARIZONA STATE DEPARTMENT OF MINES
 PHOENIX, ARIZONA
 DEC 15 A 4 01



LR2000 Internal

CR Geographic Report with Land

Download User Guide (pdf)

Purpose: This report produces a geographic listing of case information based on retrieval by Meridian/Township/Range. This report format will display the case type, case disposition, meridian, township, range, section, survey type, survey number, surface management agency, pending actions, serial number, and total case acres.

To refresh the query, do a **Ctrl-R**. It resets the page and clears any criteria fields that may have entries.



No Results

The specified criteria didn't result in any data. This is often caused by applying filters and/or selection steps that are too restrictive or that contain incorrect values. Please check your analysis filters and selection steps, and try again. The filters or selection steps currently being applied are shown below.

Filters

Disposition is equal to **AUTHORIZED, CANCELLED, EXPIRED, PENDING, REJECTED, RELINQUISHED, WITHDRAWN**
and Meridian Township Range Section is equal to **14 0200S 0220E 027**
and Admin State is equal to **AZ**

Return - Refresh

Date and Time Run:
12/30/2020 3:06:49 PM

Page 1 of 1

DEPARTMENT OF THE INTERIOR
BUREAU OF LAND MANAGEMENT
Case Recordation

Geographic Report with Land

Disposition is equal to **AUTHORIZED , CANCELLED , EXPIRED , PENDING , REJECTED , RELINQUISHED ,
WITHDRAWN**

and Meridian Township Range Section is equal to **14 0200S 0220E 028**

and Admin State is equal to **AZ**

NO WARRANTY IS MADE BY BLM
FOR USE OF THE DATA FOR
PURPOSES NOT INTENDED BY BLM

DEPARTMENT OF THE INTERIOR
BUREAU OF LAND MANAGEMENT
Case Recordation
Geographic Report with Land

Admin State: AZ
Geo State: AZ
Serial Number: AZPHX 0000447

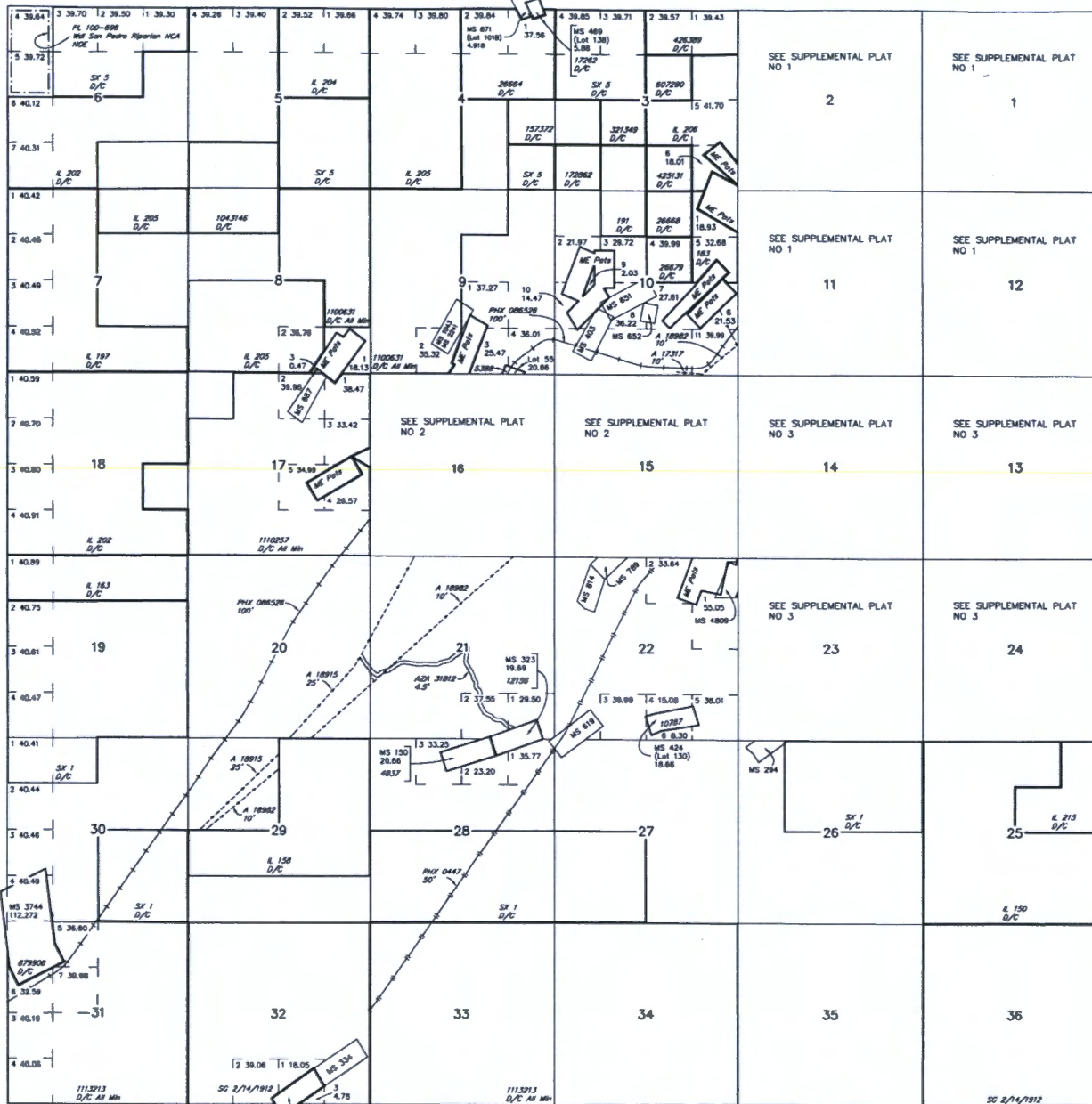
Total Case Acres: 208.240

Casetype	Case Disp	Mer	Twp	Rng	Sec	Sur Type	Sur Nr	Suf	Subdivision	Pending Action
287300	AUTHORIZED	14	0200S	0220E	028	LOTS			1;	

TOWNSHIP 20 SOUTH RANGE 22 EAST OF THE GILA AND SALT RIVER MERIDIAN, ARIZONA

COCHISE COUNTY
TUCSON FIELD OFFICE

STATUS OF PUBLIC DOMAIN
LAND AND MINERAL TITLES



TRACT NO	ORIGINAL SURVEY			
	T	R	SEC	SUBDIVISION

FOR ORDERS AFFECTING DISPOSAL OR USE OF UNIDENTIFIED LANDS WITHDRAWN FOR CLASSIFICATION, MINERALS, WATER AND/OR OTHER PUBLIC PURPOSES, REFER TO INDEX OF MISCELLANEOUS DOCUMENTS.

MDS 775 NE
776 NW
777 SW
778 SE

A 20675 R/W Road 33'
Sec 10: SE1/4SW1/4, SW1/4SE1/4
Sec 11: Lots 3,4
Sec 15: Lots 2, 3, NE1/4NW1/4
Sec 20: SE1/4NE1/4, SE1/4
Sec 21: NW1/4
Sec 29: E1/2NW1/4, SW1/4NW1/4

A 30793 R/W Road 10'
Sec 15: Lots 3,4,9

A 18915 R/W Transmission Line 15'-25'
Sec 10: SW1/4SE1/4, Lot 7

A 18982 R/W Transmission Line 10'
Sec 11: W1/2, SW1/4

AZA 35067 R/W Transmission Line 10'
Sec 14: Lots 6,11,13,16
Sec 15: Lot 1
Sec 23: Lot 5

PHX 08622 R/W Railroad and Stations 50'
Sec 2: SW1/4
Sec 3: NE1/4, NE1/4NW1/4, NE1/4SE1/4
Sec 11: N1/2
Sec 12: SW1/4NW1/4, W1/2SW1/4



R 22E | R 23E
T 21S

WARNING STATEMENT
This plot is the Bureau's Record of Title, and should be used only as a graphic display of the Township survey data. Records herein do not reflect title changes which may have been affected by lateral encroachments of rivers or other bodies of water. Refer to the underlying surveys for official survey information.

CURRENT TO	LT	GSR Mer
5-11-2017	ACAD	T 20 S
		R 22 E

PRESS FIRMLY TO SEAL

PRESS FIRMLY TO SEAL



1007



85004

U.S. POSTAGE PAID
PME 1-Day
PHOENIX, AZ
85004
DEC 11 20
AMOUNT
\$29.20
R2303S102433-03

RETURN RECEIPT
REQUESTED



PRIORITY
MAIL
EXPRESS®



EJ 450 318 035 US



This envelope is made from post-consumer waste. Please recycle - again.

PRIORITY
MAIL
EXPRESS

RECEIVED
BLM AZ STATE OFFICE

2020 DEC 15 A 9

PHOENIX, ARIZONA

To schedule free
Package Pickup,
scan the QR code.



USPS.COM/PICKUP



2018
X 9 1/2

RETURN RECEIPT
REQUESTED

PEEL FROM THIS CORNER

CUSTOMER USE ONLY

FROM: (PLEASE PRINT) PHONE (520) 444-6145
NEW EMPIRE EXPLORATION LLC
P.O. BOX 42831
TUCSON, AZ 85733

DELIVERY OPTIONS (Customer Use Only)

SIGNATURE REQUIRED Note: The mailer must check the "Signature Required" box if the mailer: 1) Requires the addressee's signature; OR 2) Purchases additional insurance; OR 3) Purchases COD service; OR 4) Purchases Return Receipt service. If the box is not checked, the Postal Service will leave the item in the addressee's mail receptacle or other secure location without attempting to obtain the addressee's signature on delivery.

Delivery Options

No Saturday Delivery (delivered next business day)
 Sunday/Holiday Delivery Required (additional fee, where available)
 10:30 AM Delivery Required (additional fee, where available)
*Refer to USPS.com® or local Post Office™ for availability.

TO: (PLEASE PRINT) PHONE ()

BUREAU OF LAND MANAGEMENT
ONE NORTH CENTRAL AVE
PHOENIX AZ
STE 800
85004

For pickup or USPS Tracking™, visit USPS.com or call 800-222-1811.
\$100.00 Insurance Included.

PAYMENT BY ACCOUNT (if applicable)

USPS® Corporate Acct. No. Federal Agency Acct. No. or Postal Service™ Acct. No.

ORIGIN (POSTAL SERVICE USE ONLY)

1-Day 2-Day Military DPO

PO ZIP Code 85004	Scheduled Delivery Date (MM/DD/YY) 12-12	Postage \$ 26.35
Date Accepted (MM/DD/YY) 12-11-20	Scheduled Delivery Time 10:30 AM 12 NOON 3:00 PM	Insurance Fee \$
Time Accepted 12:04 PM	10:30 AM Delivery Fee \$	Return Receipt Fee \$ 2.85
Special Handling/Fragile \$	Sunday/Holiday Premium Fee \$	Total Postage & Fees \$ 29.20
Weight lb. oz.	Flat Rate <input checked="" type="checkbox"/>	Acceptance Employee Initials DO

DELIVERY (POSTAL SERVICE USE ONLY)

Delivery Attempt (MM/DD/YY) Time Employee Signature
 AM PM

Delivery Attempt (MM/DD/YY) Time Employee Signature
 AM PM

LABEL 11-B, MARCH 2019 PSN 7690-02-000-9996



* Money Back Guarantee to U.S., select APO/FPO/DPO, and select International destinations. See DMM and IMM at pe.usps.com for complete details.

† Money Back Guarantee for U.S. destinations only.

** For Domestic shipments, the maximum weight is 70 lbs. For International shipments, the maximum weight is 4 lbs.

This packaging is the property of the U.S. Postal Service® and is provided solely for use in sending Priority Mail Express™ shipments. Misuse may be a violation of federal law. This packaging is not for resale. EPI3F © U.S. Postal Service® 2018. All rights reserved.